



NOTTINGHAM CITY COUNCIL
BULWELL AND BULWELL FOREST AREA COMMITTEE

Date: Wednesday, 19 February 2014

Time: 5.30 pm

Place: Bulwell Riverside, Main Street Bulwell, Nottingham NG6 8QJ

Councillors are requested to attend the above meeting to transact the following business

Deputy Chief Executive/Corporate Director for Resources

Constitutional Services Officer: Catherine Ziane-Pryor **Direct Dial:** 0115 8764298

AGENDA

Pages

- | | | |
|----------|--|---------|
| 1 | APOLOGIES FOR ABSENCE | |
| 2 | DECLARATIONS OF INTERESTS | |
| 3 | MINUTES
Meeting held on 20 November 2013 (for confirmation) | 3 - 12 |
| 4 | SCHOOL TRAFFIC ENFORCEMENT PROGRAMME
Verbal presentation by Susan Thorpe, Senior Traffic Management Officer (20 minutes total) | |
| 5 | SSE LIGHTING CONSULTATION
Presentation by Clare Sutton | 13 - 32 |
| 6 | POLICING UPDATE
Verbal Update by Acting Inspector Christine Busuttil | |
| 7 | AREA CAPITAL PROPOSALS
Report of Director of Communities | 33 - 38 |
| 8 | RIGHT TRACK (LEAD ORGANISATION) QUARTER 2 AND QUARTER 3 REPORT
Report by Stuart Bell of Right Track | 39 - 52 |

9	NOTTINGHAM CITY HOMES ENVIRONMENTAL PROPOSALS Report of the Chief Executive of Nottingham City Homes	53 - 56
10	DELEGATED AUTHORITY Report of Director of Communities	57 - 60
11	WARD PERFORMANCE Report of Director of Communities	61 - 122

IF YOU NEED ANY ADVICE ON DECLARING AN INTEREST IN ANY ITEM ON THE AGENDA, PLEASE CONTACT THE CONSTITUTIONAL SERVICES OFFICER SHOWN ABOVE, IF POSSIBLE BEFORE THE DAY OF THE MEETING

NOTTINGHAM CITY COUNCIL

BULWELL AND BULWELL FOREST AREA COMMITTEE

MINUTES of meeting held at Bulwell Riverside on **20 NOVEMBER 2013** from 5.30 pm to 7.30 pm.

✓ indicates present at meeting

- ✓ Councillor Jackie Morris (Chair)
- ✓ Councillor Ginny Klein (Joint Vice-Chair)
- ✓ Councillor Nick McDonald (Joint Vice-Chair)
- ✓ Councillor Eunice Campbell
- ✓ Councillor Alan Clark
- ✓ Councillor John Hartshorne

Community Representatives

- ✓ Reginald Knowles - Bradford Street Allotments
- Sheila Loades - Bulwell Hall Tenants' and Residents' Association
- John Hancock - CRESTA Tenants' and Residents' Association
- ✓ Doreen Carruthers - Forest Park Neighbourhood Watch
- ✓ Roz Yousouf - Nottingham Elders Forum
- ✓ David Norman - My Sight Nottinghamshire
- ✓ Gillian Slack - Ravensworth Road Methodist Church
- ✓ Paul Bakajsa - Rise Park Action Group
- ✓ John Millington - Rise Park Community Association
- Paul Jackson - Royal British Legion Bulwell Branch
- ✓ Sally Wilson - Snapewood Community Centre

City Council Colleagues, Partners, and Others in attendance

- Inspector Andrew Goodall) Nottinghamshire Police
- Nick Baker)
- Christine Busuttil)

- John Davis - Operations Manager North - Community Protection

- Sarah Watson - Senior Planning Officer - Development

- Eddie Curry - Head of Parks and Open Spaces) Communities
- Heidi May - North Locality Manager)
- Celia Knight - Neighbourhood Development Officer)
- Suki Shergill - Neighbourhood Development Officer)

- Luke Walters - Housing Patch Manager) Nottingham City Homes

- Nicky Jarvis - Tenancy and Estates Manager)
- Kim De Vergori - Assistant Director of Customer and)
Tenancy Services

Rav Kalsi	-	Constitutional Services	-	Resources
John Hancock (senior)	-	Citizen		
Julie Wright	-	Rise Park Community Association		
Stuart Bell	-	Right Track		

30 APOLOGIES FOR ABSENCE

Sheila Loades - Bulwell Hall Tenants' and Residents' Association
John Hancock - CRESTA Tenants' and Residents' Association
Paul Jackson - Royal British Legion Bulwell Branch

31 DECLARATIONS OF INTERESTS

None.

32 MINUTES

Subject to the following amendments to minute 22, Bulwell Hall Golf Course, the Committee confirmed the minutes of the meeting held on 18 September 2013 as a correct record and they were signed by the Chair:

“In response to citizens’ concerns, about the types of materials being used in the landscaping, Mr Tilford assured the committee that the inert materials were being used for landscaping the golf course...”

33 BULWELL GOLF COURSE – ADDITIONAL ITEM

The Chair was of the opinion that this item, although not included on the agenda, should be considered as a matter of urgency in accordance with Section 100(b)(4)(b) of the Local Government Act 1972, to allow for a timely update of the item.

Eddie Curry, Head of Parks and Open Spaces verbally updated the Committee on progress of the major improvements being made to the course. The Committee previously considered improvements to the course at their 18 September 2013 meeting (minute 22). The following information was provided:

- (a) in October 2013 a further application was submitted requesting an extension to planning permission until 31 May 2014. Project delays caused by a combination of the economic climate and sourcing a viable contractor had caused delays the original project completion deadline of August 2013;
- (b) all earthworks are proposed to be completed by the end of August 2014 and works continues on some outstanding reinstatements. Seeding is planned for completion in the spring to complete the work around trees;
- (c) currently work continues to progress well and mounds have now been installed around the 15th and 16th tees. In addition, work is starting to progress along the 8th tee however, in recent weeks heavy rain has slowed progress;
- (d) all material being used in the mounds are inert and rigorously checked by both Planning and Parks and Open Spaces colleagues. Although initial remedial work was not acceptable, as work continues on site the mounds are settling and will

continue to do so in time. A similar process was undertaken in producing flood defence mounds at the Embankment;

- (e) part of the material being used such as stone and building rubble comes from the NET Phase 2 project however, this process is governed by strict regulations and policed by the Environment Agency.

RESOLVED to note the verbal update.

34 AREA COMMITTEE TERMS OF REFERENCE – AMENDMENT

Heidi May, Locality Manager, introduced the Corporate Director for Communities’ report regarding changes to the Area Committee terms of reference to incorporate Area Panel functions, including the presence of a Nottingham City Homes representative at future Committee meetings.

RESOLVED to note the Committee’s revised terms of reference, as set out in Appendix 1 of the report.

35 AREA CAPITAL FUND 2013/15

Celia Night, Neighbourhood Development Officer, presented the report updating the Committee on the latest spend proposals under the Area Capital Fund and Public Realm schemes, highlighting the following points:

- (a) the scheme at Utile Gardens is jointly funded by Nottingham City Homes for a parking scheme at a cost of £14,772. Children playing signs are also to be installed adjacent to the park entrance at Hempshill Lane at a cost of £700;
- (b) additional funding is required to improve the green space, drainage and the construction of a running track at Totley Close for £9,429, which will be matched by Nottingham City Homes;
- (c) the installation of five “Unsuitable for HGV” signs around St Albans Road will attempt to deter unsuitable vehicles from using St Albans Road. This will continue to be monitored;
- (d) Remedial work to subways at Blantyre/Pine Hill Close and Bestwood Park Drive West will include an anti-graffiti layer to deter future acts of vandalism.

RESOLVED

- (1) **to approve the Area Capital programme of schemes for Bulwell and Bulwell Forest as follows:**

Ward	Project	£ Estimated Cost
Bulwell Ward	LTP Schemes	
Utile Gardens	Joint funding with NCH of parking scheme on Utile Gardens	14,772
Hempshill Lane	Install “children playing” signs near to park entrance	700

Total LTP schemes £108,468

Ward	Project	£ Estimated Cost
Bulwell Forest Ward	LTP Schemes	
St Albans Road	Signage – 5 “Unsuitable for HGV” around St Albans Road: 1 on Carey Road, 2 on Kersall Drive and 2 on Picadilly	1,500
Shellburne Close	“Keep Clear” markings	575
Brownlow Drive	Footpath resurfacing to correct damage caused by tree root uplift	3,400
Earlsfield Drive	Footpath resurfacing on both sides of Earlsfield Drive from 2 Rise Park Road to Cardington Road	31,511
Cantrell Road	Double yellow lines for junction protection on Cantrell Road	5,000

Total LTP schemes £44,968

Bulwell Ward Public Realm schemes

Location	Type	Estimate	Details
Totley Close	Contribution	9,429	Additional contribution to improve green space, drainage and provide running track, matched by NCH

Total Public Realm schemes £9,429**

Decommitments - £0

Bulwell Forest Ward Public Realm schemes

Location	Type	Estimate	Details
Hucknall Road	Tree works	5,000	Tree works on Linear Walkway, Hucknall Road
Blantyre/Pine Hill Close	Subway painting	3,000	Improvements to appearance to encourage use and deter vandalism
Bestwood Park Drive West	Subway painting	1,557	Improvements to appearance to encourage use and deter vandalism

Total Public Realm schemes £9,557**

Decommitments - £0

- (2) **having deducted the approved allocations, to note the following monies available:**

Bulwell Ward - £109,153;

Bulwell Forest Ward - £ 79,321.

36 ENVIRONMENTAL SUBMISSIONS FROM NOTTINGHAM CITY HOME (NCH)

Nicky Jarvis, Tenancy and Estate Manager for NCH presented the report of the Chief Executive of NCH, informing the Committee of schemes requested by NCH tenants, staff and those living within the environment of NCH properties, from the Housing Revenue Fund. The following points were highlighted:

- (a) changing the locks at Snapewood from a variety of types to a consistent suited system will allow services easy access to clear and maintain the relevant areas. Currently all the locks are different, even where there are two gates servicing one alley way;
- (b) the creation of additional parking spaces on Utile Gardens will be jointly funded with Nottingham City Council for a total cost of £29,544.33 improving facilities to improve accommodation;
- (c) bow top gating to be installed at Courtleet Way and Willow Hillow Close along the paths and walkways would theoretically deter youths dealing drugs and using cycles and motorbikes congregating or escaping from police officers;
- (d) metal fencing will replace the wooden fence between 17 – 18 Saxelby Gardens in efforts to deter unwanted visitors late at night. The gap created by a removed panel at the moment is being used as a cut through which is unnerving the residents;
- (e) resurfacing of the communal tarmac area for 58, 59 and 60 Duchess Gardens is required to remedy the poor conditions caused by loose stones and gravel. With the site in use predominantly by elderly and vulnerable people there is a certain health and safety risk involved which heightens the need for improvements.

RESOLVED to approve the following schemes:

Site	Proposal	Cost £
Bulwell ward:		
Snapewood	Changing locks to a suited system	8,531.52
Hornbeam Gardens	White line parking bays around 16 – 24 Hornbeam Gardens	1,500
Utile Gardens	Creation of additional parking spaces, joint venture between NCH and NCC	29,544.33
Courtleet way / Willow Hillow Close	Installation of bow top gating along paths and walkways	4,246
Sandhurst Road	Install clearly visible signage for the bungalows on Sandhurst Road	2,550
Saxelby Gardens	Installation of metal fence situated between 17 – 18 Saxelby Gardens	1,818.15

Norwich Gardens	12 metre x 1.8 metre high fence with a double gate	2,466.68
Duchess Gardens	Resurfacing on communal tarmac area for 58, 59, 60 and 61 Duchess Gardens	4,718.97
Duchess Gardens	New gate at the front and rear of 11 Duchess Gardens	1,079.13
Murby Crescent	Install 6 front lockable metal gates at specific entrances to increase security	3,049.24
Hazelhurst Gardens	Installation of a metal gate with a combination lock to allow tenants access	1,312.20
Totley Close	Joint venture with Area Capital Fund – drain works and a running track	18,858.80 (9,429.10)
	Total budget available	78,032.16
	Proposals	55,473.16
	Remaining funds	22,559
Bulwell Forest ward:		
Site	Proposal	Cost
Colston Road	Section of the metal fencing be removed and replaced with a metal gate	3,729.15
Flaxton Way	Resurfacing of communal parking area outside 38 Flaxton Way	2,581.69
	Total budget allocation	19,326.72
	Proposals	6,310.84
	Remaining funds	13,015.88

37 LAND AND PLANNING POLICIES DOCUMENT – PREFERRED OPTION CONSULTATION

Sarah Watson, Local Development Framework Manager, introduced the Director of Planning and Transport's report and highlighted the following points:

- (a) the Land and Planning Policies Development Plan Document is currently undergoing consultation which last until 2 December 2013. The Preferred Option is an informal consultation stage after which the document will be formally published;
- (b) there are 56 draft policies within the Preferred Option and 76 draft Land Allocations. Each site underwent consultation and some of the earlier sites considered are not being taken forward;
- (c) the following site have been taken forward into the Preferred Option:
 - Bestwood Road (former Bestwood Day Centre)
 - Blenheim Lane
 - Former Henry Mellish Main School
 - Former Henry Mellish School Playing Fields (Piccadilly)
 - Hucknall Road / Southglade Road (Southglade Food Park)
 - Linby Street / Filey Street
 - Stanton Tip
- (d) Belgrave Road / Linnington Road and Bestwood Sidings were considered within the consultation but have not been taken forward into the Preferred Option.

RESOLVED to note the ongoing consultation and opportunity to respond before 2 December 2013.

38 WARD PERFORMANCE REPORTS

Celia Knight, Neighbourhood Development Officer, and Heidi May, North Locality Manager, introduced the report of the Director of Neighbourhood Services outlining the community engagement which has taken place and is planned in Bulwell and Bulwell Forest.

RESOLVED to note the ward performance for Bulwell and Bulwell Forest.

39 POLICING ISSUES

Policing update

Inspector Andy Goodall verbally updated the Committee on policing issues in both Bulwell and Bulwell Forest wards, highlighting that a dispersion order is in place to tackle anti-social incidents in both wards and will be reviewed on a monthly basis, which reflects a resource intensive approach to managing this.

Anti-social behaviour reporting process

John Davis, Operations Manager for Community Protection and Inspector Andy Goodall delivered the presentation highlighting the following points:

- (a) Nottingham City Council has a unique provision of Community Protection with a collaborative approach from the Council and the police. Richard Antcliffe, Head of Community Protection has national involvement with the Home Office;
- (b) the aim of Community Protection is to promote a clean and clear environment akin the 'Broken Windows' theory – where there are issues, if not tackled can exacerbate further;
- (c) there are a 100 Community Protection Officers (CPOs) and 30 auxiliary CPOs who provide a visible presence in neighbourhoods who work with local beat teams. Community Protection includes a number of other services, such as Trading Standards and Environmental Health;
- (d) Community Protection officers work in coordination with other organisations such as Street Pastors and Civil Enforcement colleagues;
- (e) the policy on anti-social behaviour (ASB) was rewritten last year to define ASB as an act affecting another person, the peaceful enjoyment of an environment and a general nuisance as opposed to a particular person;
- (f) where ASB is reported, call handlers will designate the scenario into one of the three defined categories which will determine an appropriate response time. Where an immediate response is deemed necessary a response will be provided within 15 minutes. If the call is an urgent one then a response will be authorised within 60 minutes and finally, any other report is responded to within 24 hours;

- (g) when a vulnerable victim has been identified they are given a unique number which is followed up by the Safer Neighbourhoods Team. When tackling criminality in the area, police colleagues will work with Community Protection, an approach which has proved to be a success around Deptford Crescent.

The Committees thanks were recorded to Inspector Goodall who will be taking on the role of Acting Chief Inspector at Oxclose Lane Police Station.

RESOLVED to note the policing issues reported in the update.

40 DELEGATED AUTHORITY AND FINANCE REPORT

Celia Knight, Neighbourhood Development Officer, introduced the report which informed the Committee of the schemes approved by the Director of Neighbourhood Services using delegated authority.

RESOLVED

- (1) to note the following allocations made via delegated authority of the Director of Communities:

<u>Bulwell Ward</u> (Councillors Klein, Hartshorne and Morris)	£
Family and Community Team Glee Club	3,150
Hemphill Hall Reading Project	300
Buwell Dovecote Feasibility	2,622
National Play Day	300
Bulwell Bogs Event	500

The following have received Councillor support but are awaiting further information

Bulwell Public toilets Sunday opening	1,980
Bulwell and Rise Park Xmas Lights	3,200
St Mary’s School	59

<u>Bulwell Forest Ward</u> (Councillors Campbell, Clark and McDonald)	£
Rise Park Lunch Club Equipment	150
Malt Cross Trust (Street Pastors)	150

- (2) to note the financial reports as follows:

<u>Bulwell Ward</u>	£
Balance Brought Forward 2012/13	39,236
Councillor Funding 2013/14	15,000
Deprivation Funds	15,993
Total Funds	70,229
Allocated funds 2013/14	14,881
De-committed schemes	0
Uncommitted funds after allocations	55,348

<u>Bulwell Forest Ward</u>	£
Balance Brought Forward 2012/13	25,847
Councillor Funding 2013/14	15,000
Deprivation Funds	0

Total Funds	40,847
Allocated funds 2013/14	2,788
De-committed schemes	184
Uncommitted funds after allocations	38,243

41 FUTURE MEETING ARRANGEMENTS

RESOLVED to next meet at 5.30pm on 19 February 2014 at Bulwell Riverside.

This page is intentionally left blank



Consultation Process within the Street Lighting PFI

**SSE Contracting
Working in partnership with
Nottingham City Council**



Agenda

- Design preparation
- Key stakeholder consultation
- Construction
- Co-ordinating the works
- Removal of old and reinstatement
- Completed scheme
- Project evaluation

Who are We?

We are SSE Contracting (SSE)

- **Working in partnership with Nottingham City Council as the Service Provider for the Street Lighting PFI Contract;**
- **We are experienced in PFI contracts – undertaking similar works in both Northern and Southern England;**

Key Facts!

The replacement of lighting equipment in the City of Nottingham, including for;

- Approx 24,000 lamp posts;
- Approx 11,000 lantern changes;
- Capital Investment;
- 25 year contract;
- 5 year Core Investment Period (CIP);

Key Messages

- Only affordable means to carry out work;
- Major long term investment & employment by both SSE and Nottingham City Council;
- Improved quality of lighting;
- Improved road safety;
- Supports Nottingham City Council crime reduction initiatives;
- Supports Nottingham City Council corporate carbon reduction initiatives;

Key Messages

- Remote Monitoring – Central Management System (CMS);
- Reduced burning hours (trimming);
- Reduced CO2 emissions;
- Innovation;
- Recycling Materials;

Key Stakeholder Consultation

Conservation Areas & City Centre

- Heritage lighting;
- Hanging baskets;
- Festive lighting;
- Tram system;

Where did we start?

Each of the 20 Council wards to have works carried out in first 30 months of the contract;

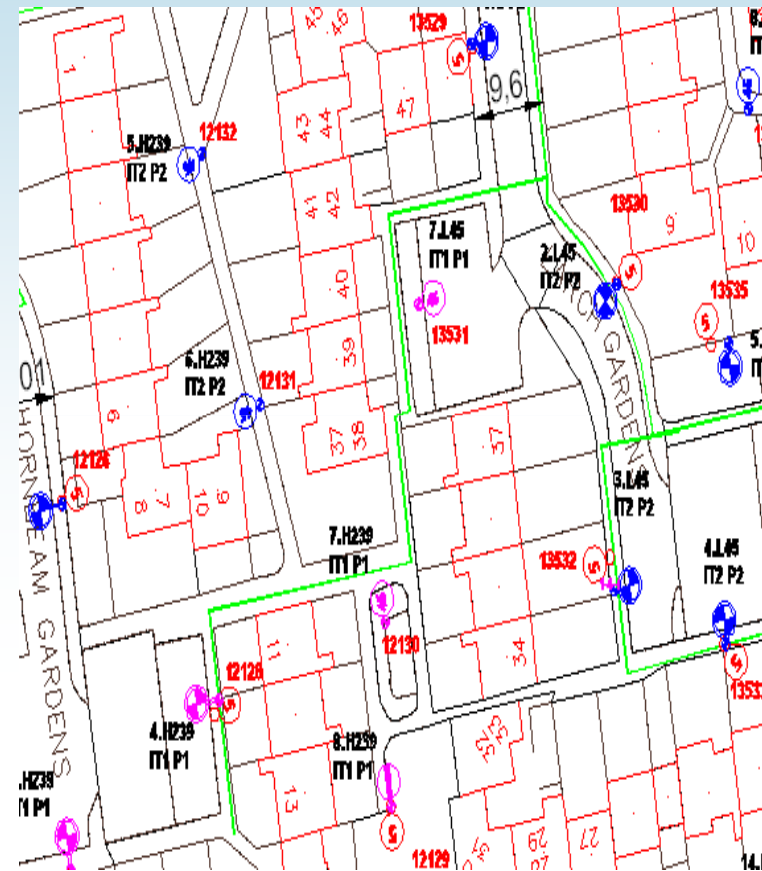
Works began in the Dunkirk & Lenton Ward in Sept 2010;

Core Investment Programme (CIP) - details approximate dates when works will be carried out;



Design Preparation

- All streets are designed on an individual basis and drawn up in the office by fully trained designers, visits are made to the streets they are designing
- The new lighting has been designed to meet the requirements of the latest British and European Standards and Nottingham City Council's specification.
- This means that columns cannot always be replaced in their original position
- We understand that some residents have had the benefit of lighting from the existing system on their property but we cannot always replace them in the original positions and therefore the benefit cannot always be retained



Pre-Construction

Pre-Start Letter drops

- Advises you of what will happen during the construction period, and how you can help;
- Includes our contact details;
- Delivered to each property approximately 20 days before works start on-site;



Construction

How will the works be co-ordinated with others?

Working in partnership with the Authority and our sub - contractors

Our aim is to be in and out of the street with as little disruption as possible;



Construction

Typical site in a PFI contract

lamp-post installation works;

transfer of electricity power supplies;

column removals and reinstatements of footways;



Construction

Co-ordination during installation

there will be instances of columns side by side at this stage;

this is where we use existing electricity power supplies and transfer them to the new columns;



Completed Works

- Improved Quality of lighting
- Better colour rendition
- Fear of crime reduced
- Energy efficient



Project Evaluation

Aims & Objectives

- To ensure that the majority of Nottingham residents experience little or no disruption as a result of installation works;
- Our objective is to improve our Service;
- We need to find out how we can improve;
- Identify our good and bad points;
- Find out what you think of our service;

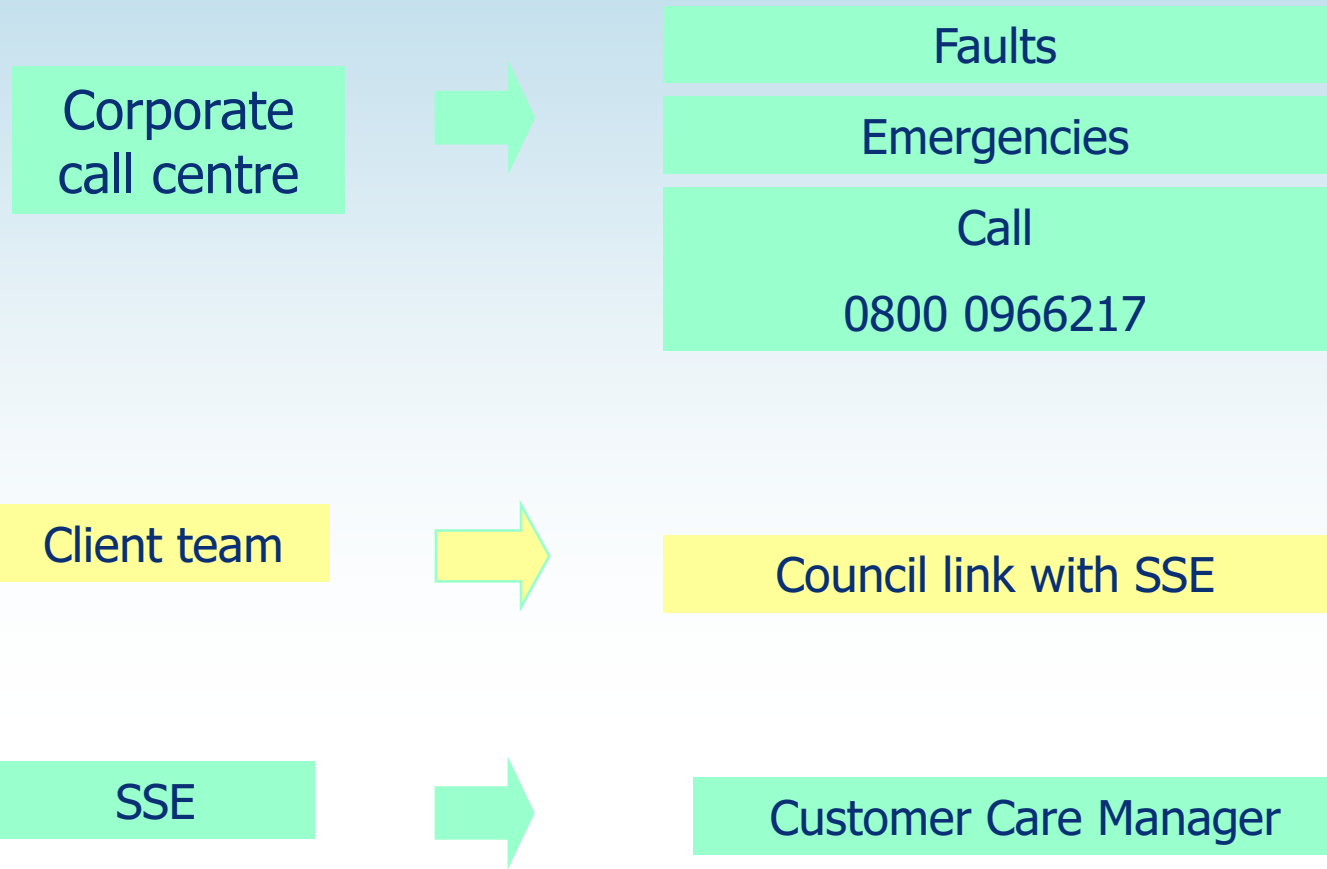
Project Evaluation

We welcome feedback – Critical, Constructive or Good:

Comments from our PFI:

- Its now very dark on my front and back garden. The old lights provided a much larger area of light. V poorly placed lamp posts!!
- Not as bright as previous lights but nice and quiet. Adequate
- Lighting is so much better losing the orange light to white light is clearer and safer

Additional Information



Summary

- Consult;
- Modern design standards;
- Installation - minimise disruption;
- Deliver an effective and energy efficient scheme;
- Carry out customer review survey;
- Continually learn, improve and develop the service;

Summary

We would welcome any questions you may have



Contact Tel. No: 0800 0966217

Website :
www.mynottingham.gov.uk/streetlighting

This page is intentionally left blank

AREA COMMITTEE 1 (Bulwell & Bulwell Forest) – 19 February 2014

Title of paper:	AREA CAPITAL FUND - 2013/15 PROGRAMMES	
Director(s)/ Corporate Director(s):	Andy Vaughan Director of Neighbourhood Services	Wards affected: Bulwell and Bulwell Forest
Report author(s) and contact details:	Celia Knight, Neighbourhood Development Officer (Bulwell Forest Ward) Tel 0115 8833729 celia.knight@nottinghamcity.gov.uk	
Other colleagues who have provided input:	Nancy Hudson, Projects Officer, Highway Services Tel: 0115 915 2061 nancy.hudson@nottinghamcity.gov.uk	
Date of consultation with Portfolio Holder(s) (if relevant)	Not applicable	
Relevant Council Plan Strategic Priority:		
Cutting unemployment by a quarter		<input type="checkbox"/>
Cut crime and anti-social behaviour		<input type="checkbox"/>
Ensure more school leavers get a job, training or further education than any other City		<input type="checkbox"/>
Your neighbourhood as clean as the City Centre		<input type="checkbox"/>
Help keep your energy bills down		<input type="checkbox"/>
Good access to public transport		<input checked="" type="checkbox"/>
Nottingham has a good mix of housing		<input type="checkbox"/>
Nottingham is a good place to do business, invest and create jobs		<input type="checkbox"/>
Nottingham offers a wide range of leisure activities, parks and sporting events		<input type="checkbox"/>
Support early intervention activities		<input type="checkbox"/>
Deliver effective, value for money services to our citizens		<input checked="" type="checkbox"/>
Summary of issues (including benefits to citizens/service users):		
This report provides Area Committee with :-		
<ul style="list-style-type: none"> • Latest spend proposals under the Area Capital Fund including highways and footways • Latest spend proposals regarding Public Realm schemes 		
Recommendation(s):		
1	That the prioritised Area Capital and public realm schemes for Bulwell and Bulwell Forest as set out in Appendix 1 be approved	

1. REASONS FOR RECOMMENDATIONS

- 1.1 The Nottingham LTP 2011-2026 maintains a commitment to deliver local transport improvements across Nottingham's Neighbourhoods and prioritises small scale transport improvements of importance to local communities
- 1.2 As part of the budget process Nottingham City Council approved in March 2011 an LTP capital allocation of £2.5 million citywide between 2011-2013. In addition, on March 4th 2013, an additional allocation of £2.5million was allocated for 2013-2015.
- 1.3 To give opportunity for the Area Committee to make comment on suggested schemes and their progress

2. BACKGROUND (INCLUDING OUTCOMES OF CONSULTATION)

- 2.1 The Area Capital Programme was established to improve the environment of the neighbourhoods and to create a sense of place for residents in order to improve the quality of life of local people. Since it was established in 2006 to meet the then corporate priority of “Transforming Neighbourhoods” the Area Capital Fund has included a total programme expenditure portfolio of £40 million.
- 2.2 Resources are allocated from the Nottingham City Council general fund, the Local Transport Plan (LTP) and from the Housing revenue Account. To achieve a joint approach to environmental improvements in neighbourhoods, a greater degree of flexibility has been established to prioritise and deliver improvements so that there is a synergy in local solutions for local issues across neighbourhoods.
- 2.3 The programme of works is a rolling programme. There have been instances where schemes are started, with strong community involvement and interest, only to be altered at a later stage due to changing circumstances such as economic conditions and changes in land values.
- 2.4 The Area Committee, particularly community representatives, are invited to comment specifically on those schemes identified in the proposals column and also to consider whether certain schemes can be linked to other programmes of work in order to generate best value and create a greater impact on the local area.

3. OTHER OPTIONS CONSIDERED IN MAKING RECOMMENDATIONS

- 3.1 None

4. FINANCIAL IMPLICATIONS (INCLUDING VALUE FOR MONEY/VAT)

- 4.1 Bringing together the various strands which form part of the Area Capital Programme enables the City Council to respond efficiently in delivering on public realm improvements as identified by local people.

5. RISK MANAGEMENT ISSUES (INCLUDING LEGAL IMPLICATIONS AND CRIME AND DISORDER ACT IMPLICATIONS)

- 5.1 A risk register has been produced which is regularly monitored.

6. EQUALITY IMPACT ASSESSMENT

- 6.1 Has the equality impact been assessed?
Not needed (report does not contain proposals or financial decisions)

7. LIST OF BACKGROUND PAPERS OTHER THAN PUBLISHED WORKS OR THOSE DISCLOSING CONFIDENTIAL OR EXEMPT INFORMATION

- 7.1 Highways Framework Agreement

8. PUBLISHED DOCUMENTS REFERRED TO IN COMPILING THIS REPORT

- 8.1 Executive board report Area Capital Resource Allocations for 2011-2013 19th July 2011.
Full Council report March 4th 2013.

**Bulwell Area Capital 2013 - 2015 Programme
Bulwell LTP schemes**

Location	Type	Councillor Prioritised / Area Committee Approved	Estimate	Estimated start date	Estimated completion	Details
Norwich Gardens	Footpath	Prioritised 6 February 2014	£8,245	TBC		Patching of footpath on Norwich Gardens
Squires Avenue	Disabled parking bay	Prioritised 16 January 2014	£1,600		June 2014	Installation of disabled parking bay on Squires Avenue, including TRO
Hempshill Lane	Zebra crossing	Prioritised 16 January 2014	£2,000		July 2014	Feasibility study for zebra crossing near to park and cemetery
Utile Gardens	Parking scheme	Approved November 2013	£14,772	under review		Joint funding with NCH of parking scheme on Utile Gardens
Hempshill Lane	Signing	Approved November 2013	£700		June 2014	Install "Children playing" signs near to park entrance
Bulwell	Parking	Approved September 2013	£2,815	Feb/March 2014		Provide assistance to parking issues in the Ward.
Syverns Street	Signing	Approved September 2013	£932		End March 2014	Install "no HGV" signs.
Bulwell	Lining	Approved September 2013	£6,000	Feb/March 2014		Carry out large scale re-lining to improve Traffic Management and road safety in the ward.
Bulwell	Zebrites	Approved September 2013	£15,000		June 2014	Upgrade 3 zebra crossings to Zebrites for increased safety
Minerva Street	Footpath	Approved February 2013	£68,249	--	Complete	Footpath reconstruction - scheme total £93,750 first £25,501 approved in Feb 2013.

Total LTP schemes*

£120,313

Bulwell Public Realm schemes

Location	Type	Councillor Prioritised / Area Committee Approved	Estimate	Estimated start date	Completed	Details
Totley Close	Contribution	Approved November 2013	£9,429	10 February 2014		Additional contribution to scheme to improve green space, improve drainage and provide running track - matched by NCH

Total Public Realm schemes**

£9,429

Bulwell Withdrawn schemes

Location	Type	Reason	Amount	Details
----------	------	--------	--------	---------

Total Decommited***			£0	
2013-2015 LTP allocation			£170,000	
LTP carried forward from 2011-2013			£0	
2013 - 2014 Public Realm allocation			£51,000	
Public Realm carried forward			£6,050	
Total Available 2013 - 2015 ACF			£227,050	
<i>*Less LTP schemes</i>			- £120,313	
<i>**Less Public Realm schemes</i>			- £9,429	
<i>***Decommited funds</i>			+ £0	
Remaining available balance			£97,308	
LTP element remaining			£49,687	
Public Realm element remaining			£47,621	

Bulwell Forest Area Capital 2013 - 2015 Programme

Bulwell Forest LTP schemes

Location	Type	Councillor Prioritised / Area Committee Approved	Estimate	Estimated start date	Estimated completion	Details
Brownlow Drive	Lining	Prioritised 14 January 2014	£5,500		January 2015	Up to £5,500 to extend double yellow lines on Brownlow Drive to reduce nuisance caused by school parking
Highbury Road	Zebrites	Prioritised 14 January 2014	£5,000		June 2014	Upgrade zebra crossing to Zebrites for increased safety
Bestwood Park Drive West	Footpath	Prioritised 14 January 2014	£5,200	Easter holiday		Resurface pavement immediately outside Rise Park School
Bannerman Road	Disabled parking bay	Delegated Authority December 2013	£75		End February 2014	Safety audit around potential disabled parking bay on Bannerman Road
St Albans Road	Signing	Approved November 2013	£1,500		June 2014	Install 5 "Unsuitable for HGV" signs around St Albans Rd: x 1 on Carey Rd, 2 on Kersall Dv, 2 on Picadilly
Stellburne Close	"Keep Clear" marking	Approved November 2013	£575		June 2014	"Keep Clear" markings to be provided, with letters to residents clarifying the reasons for this
Brownlow Drive	Footpath	Approved November 2013	£3,400	--	Completed	Resurfacing sections of footpath to correct damage caused by tree root uplift
Earlsfield Drive	Footpath	Approved November 2013	£31,511	--	Completed	Resurfacing footpaths on both sides of Earlsfield Drive from Rise Park Rd to Cardington Close
Cantrell Road	Road lining	Approved November 2013	£5,000			Up to £5k to provide double yellow lines for junction protection on Cantrell Road
St Albans Road	Traffic Survey	Approved May 2013	£2,400	--	Completed	Carry out 2 day traffic survey.
Rise Park Road	Street Name Plate	Approved May 2013	£600	--	Completed	Install 4 new Street Name Plates to help direct visitors to the Church on Rise Park - joint funded with the church.

Total LTP schemes*

£60,761

Bulwell Forest Public Realm schemes

Location	Type	Councillor Prioritised / Area Committee Approved	Estimate	Estimated start date	Completed	Details
Recreation Ground	Footpath	Prioritised 14 January 2014	£700	April 2014		Install footpath signs and way mark line of the footpath to advise walkers and prevent incursion onto golf course
Hucknall Road	Tree works	Approved November 2013	£5,000			Tree works on the Linear Walkway, Hucknall Road
Blantyre/Pine Hill Close	Subway painting	Approved November 2013	£3,000	work started		Paint subway to improve appearance, encourage use and deter vandalism
Bestwood Park Drive West	Subway painting	Delegated Authority October 2013	£1,557	--	Completed	Paint subway to improve appearance, encourage use and deter vandalism

Total Public Realm schemes**

£10,257

Bulwell Forest Withdrawn schemes

Location	Type	Reason	Amount	Details
----------	------	--------	--------	---------

Total Withdrawn***

£0

2013-2015 LTP allocation

£100,000

LTP carried forward from 2011-2013

-£2,930

2013 - 2014 Public Realm allocation

£30,000

Public Realm carried forward

£6,794

Total Available 2013 - 2015 ACF

£133,864

*Less LTP schemes

- £60,761

**Less Public Realm schemes

- £10,257

***Decommitted funds

+ £0

Remaining available balance

£62,846

LTP element remaining

£36,309

Public Realm element remaining

£26,537

Area 1 Report – Community Associations

All Community Associations in Area 1 are working with Right Track in a positive manner. There are currently no issues to report as:

- All Community Associations have provided their up to date monitoring Information for quarter 1 and subsequently
- All Community Associations have been paid in a timely manner.

As reported last quarter, the **Quarterly meetings** of all Community Associations in Areas 1 and 2 continue to be attended by all Area 1 Community Associations. The Associations continue to enjoy this joint approach as it allows them to work together effectively. An extra meeting of the Associations will be arranged in late February in order to feedback the Council's strategy for the future of Community Centres. Whilst none of the Centres is in immediate danger of closure, there is a need to ensure that they are aware of their role in supporting their centre to remain open in 2019.

In terms of adherence to contract output requirements, all Community Associations in Area 1 have submitted their quarter 3 outputs and all are on track to achieve their end of year targets.

We are currently planning meetings with each Community Association to identify the support they need to update their Development Plan. NCVS and the Neighbourhood Development Officers have also offered their support in the Development Plan process.

Community Association Development

In the last report we mentioned that we had identified a £10k grant for Rise Park Community Association to enable them to provide a range of youth provision in order to reduce youth nuisance. We are delighted to announce that the bid was successful and will allow the Community Association to purchase new equipment as well as to engage a delivery partner to run the provision.

This page is intentionally left blank

Youth Engagement Team Area One and Two (Update January 2014)



Youth Engagement Team Area One and Two

To date we have secured additional funding of 36,000 and this has contributed to our over performance on our targets from the area grants. Additional funds Right Track funding of 14,300 was used for April-July 24,000 area grant.

Area One

	Q1	Q2	Q3	Q4	Annual Target
Measuring Outputs		13	14	14	41
Unique Young People Engaged		30	23		
Percentage Above Target		230%	164%		

Area Two

	Q1	Q2	Q3	Q4	Annual Target
Measuring outputs		16	16	16	48
Unique Young People Engaged		101	57		
Percentage Above Target		625%	356%		

Attendance

A Total of 145 young people attended the provision in Area One and Two between 1st October 2013 and 31st December 2013

Young People attended a total of 2,246 hours of Youth Engagement Provision within this time.

A total of 80 New/Unique members attended.

Current Provision

Youth Forum Tuesday 6-9pm alternate Tuesdays

William Olds

11-19

The Youth Forum was set up to encourage members of the open access provision to develop their skills, take responsibility and work towards making changes within their communities.

They have also joined the Youth Council with Nottingham City and have attended the council house for an event with others planned.

They are currently applying for a grant to run their activities, training days and a residential.

10 young people are currently on the Youth Forum.



Youth Forum Tuesday 6-9pm alternate Tuesdays

Heathfield Community Centre Basford

11-19

The Youth Forum was set up to encourage members of the open access provision to develop their skills, take responsibility and work towards making changes within their communities.

They meet every other Tuesday. The young people are engaging at the minute and are nearly ready for their first visit of which is December. The Youth Forum is currently looking at what other provision they would like to see and how they are going to make it happen.

Current Provision

Bike project Tuesday 3-30pm- 6.30pm
Bulwell Hall Healthy Living centre
11-19

This project is running on a Tuesday evening in partnership with Travelright.

The project is targeting the young people who need the extra support, experiencing difficulties within their lives, building self esteem and aspirations.

The aim of the project is to teach them how to strip, build, fix and maintain a bike to ensure that it is roadworthy. All the parts are provided.

If they attend all the six sessions they will be able to keep the bike

Nottinghamshire Police have donated the bikes for the project.

(8 individual young people signed up)

Young people, Right Track and Travel Right Staff



Current Provision

Nottinghamshire Police Cadets/NCS Tuesday 7-9pm

William Olds

16/17 year olds

Right Track secured the use of the building for the Nottinghamshire Police Cadets to use and they started in September. The Cadets operate throughout the academic year.

The importance of setting up this provision was to strengthen the relationship between the local communities, young people and Nottinghamshire Police as a whole. It is historic and well known that this has over the years been strained in particular areas.

Right Track is working with all of the Cadets across the City and County. We have also committed to run the NCS programme with them.

The Programme is running well and the cadets who are attending come from some of the surrounding areas, which in itself will work towards socially educating young people and the communities in which they serve.

Whilst the cadets have been at William Olds, other young people that have been attending have shown interest and been part of various conversations around policing and perceptions. They have also attended some of the cadet's sessions.

They have also spoke about the next recruitment process in June 2014, this has increased opportunities and aspirations, and most of all build and strengthen the relationship between generations.

**Young people are moving on from ("What are the feds doing here")
(18 individual young people engaged)**

Open Access Wednesday 6-30-9-30pm

William Olds

11-19

This was set up By Right Track as PAYP provision originally 18 months ago, as there had been very little open access services in the area of youth.

The sessions have been very well attended and this has provided the evidence to increase the provision in the area for the 11-19 age range.

The sessions focus on social education, life skills, sports and healthier lifestyles.

Priorities from the local area committee/ NAT

Current Provision

Bike project Wednesday

William Olds

11-19

This project was running on a Wednesday evening in partnership with Travelright.

The project is targeting the young people who need the extra support, experiencing difficulties within their lives, building self esteem and aspirations.

The aim of the project is to teach them how to strip, build, fix and maintain a bike to ensure that it is roadworthy. All the parts are provided.

If they attend all the six sessions they will be able to keep the bike

Nottinghamshire Police have donated the bikes for the project.

This project has been completed



Open Access Thursday 6-30-9-30pm

William Olds

11-19

This was set up By Right Track as PAYP provision originally 18 months ago, as there had been very little open access services in the area of youth.

The sessions have been very well attended and this has provided the evidence to increase the provision in the area for the 11-19 age range.

The sessions focus on social education, life skills, sports and healthier lifestyles.

(Priorities from the local area committee/ NAT)

(This session has also a sexual health session running with external monies)

New Developments

Saturday afternoons. (30th November- 31st March 14)

Dance, Music, Bands, Recording studio

1-4 pm

William Olds 11-19

This is a pilot project and will involve a dance instructor for the sessions in the dance studio, music session where young people will be encouraged to bring in their own musical instruments and the sound recording studio will be available to engage young people in song writing recording

This session is starting to encourage young talent from the local area that have auditioned talent competition.



Bestwoods Got Talent (22nd March 2014)

It is aimed at all of the communities young and old.

Right Track has been working with the Bigwood Partnership, Chris Easom and Dale Griffin. The local councillors have also contributed financially and are one of the judges at the final. The auditions have taken place on the 7th 14th and 21st of January at local community centres.

Over twenty acts have auditioned.

The Final will be taking place on 22nd March at Bigwood School 2-4pm and all parties are looking forward to it.

New Developments

Heathfield Community Centre

Negotiations have now taken place between Heathfield community association and Right Track in relation to the use of the building.

This has enabled us to deliver new provision.

We are currently putting together a bid for the association to develop more youth engagement.

Heathfield Community Centre

Bike Project

Starts Monday 3rd February at 3.00pm-6pm

This project is in partnership with Travelright.

The project is targeting the young people who need the extra support, experiencing difficulties within their lives, building self esteem and aspirations.

The aim of the project is to teach them how to strip, build, fix and maintain a bike to ensure that it is roadworthy. All the parts are provided.

If they attend all the six sessions they will be able to keep the bike

Nottinghamshire Police have donated the bikes for the project.

(8 individual young people)

Heathfield Community Centre

Open access 6-9pm starts Monday 3rd February

This session has been requested by the young people. The young people have asked for another night to come into the centre.

This will be open access and will provide cookery and other ideas led by the young people

The sports field will be utilised in the summer to do outdoor activities.

Youth Forum Tuesday 6-9pm alternate Tuesdays

Heathfield Community Centre Basford

11-19

The Youth Forum was set up to encourage members of the open access provision to develop their skills, take responsibility and work towards making changes within their communities.

They meet every other Tuesday. The young people are engaging at the minute and are attending the first visit at Loxley house on the 3rd of December. The Youth Forum is currently looking at what other provision they would like to see and how they are going to make it happen. They are instrumental in developing new provision.

Henry Mellish Sports centre (Football) Sport England funding

We will be running football for 14-19 yrs on Tuesday Evening between 8-9pm

This will start on Tuesday 4th February

New Developments

Bike project.

Bulwell Hall Healthy Living centre

Starts Tuesday 4th February at 3.30pm-6-30 for 6 weeks

This project is a partnership with Travelright.

The project is targeting the young people who need the extra support, experiencing difficulties within their lives, building self esteem and aspirations.

The aim of the project is to teach them how to strip, build, fix and maintain a bike to ensure that it is roadworthy. All the parts are provided.

If they attend all the six sessions they will be able to keep the bike

Nottinghamshire Police have donated the bikes for the project **(8 individual young people signed up)**

Cookery sessions

Bulwell Hall Healthy Living centre

Start Tuesday 4th February 3-30-6-30pm

Bait Project Police fishing project.

Basford, Bulwell, Bestwood and Top valley

This project is aimed at the young people who are risk of offending or needing more engagement, this is a targeted project. This will take place from next March through to September/October 2014

Young people can only remain on the project if they do not get excluded from school or get into trouble from the time they sign up.

This partnership is with Nottinghamshire Police.

The project has now started and the young people are turning up on Tuesday evenings, as arranged on the programme.

The programme is in place until the autumn.

The local Councillors have provisionally agreed to fund some of the residential and trips for the young people.

The end goal is to have 3 young people from each area

The Cargo Bike Project

This project will identify the young people that have shown enthusiasm and commitment whilst taking part on the Bike projects over all the areas.

The young people will work on the project as Bike project assistants and will then be able to work on the Cargo Bike.

This is anticipated to take place in April.

New Developments

Rise Park Youth Sessions

To engage with the young people who are causing concerns within the community.

Conversations have taken place with the young people.

Meetings/ discussions have already taken place with Rise Park community Association to look at the use of the buildings and the availability to the young people. This is still under discussion at the minute and we are looking how we are going to achieve this.

(Lag priority, youth provision at community centre Rise Park area)

Right Track has worked with Rise Park Community Association to submit a bid for youth provision.

At Christmas the community association received a phone call to say that we had been successful and awarded nearly 10,000.

This is now ready for the Community Centre to provide youth provision.

We will be using this as good practice and are working with other community organisations to enhance their youth engagement by the same process.

Silver Surfers Pilot Project Rise Park

Wednesday Mornings 10-12am

This will involve the older generation at Rise park Community centre learning how to use the internet, ordering online, social networking.

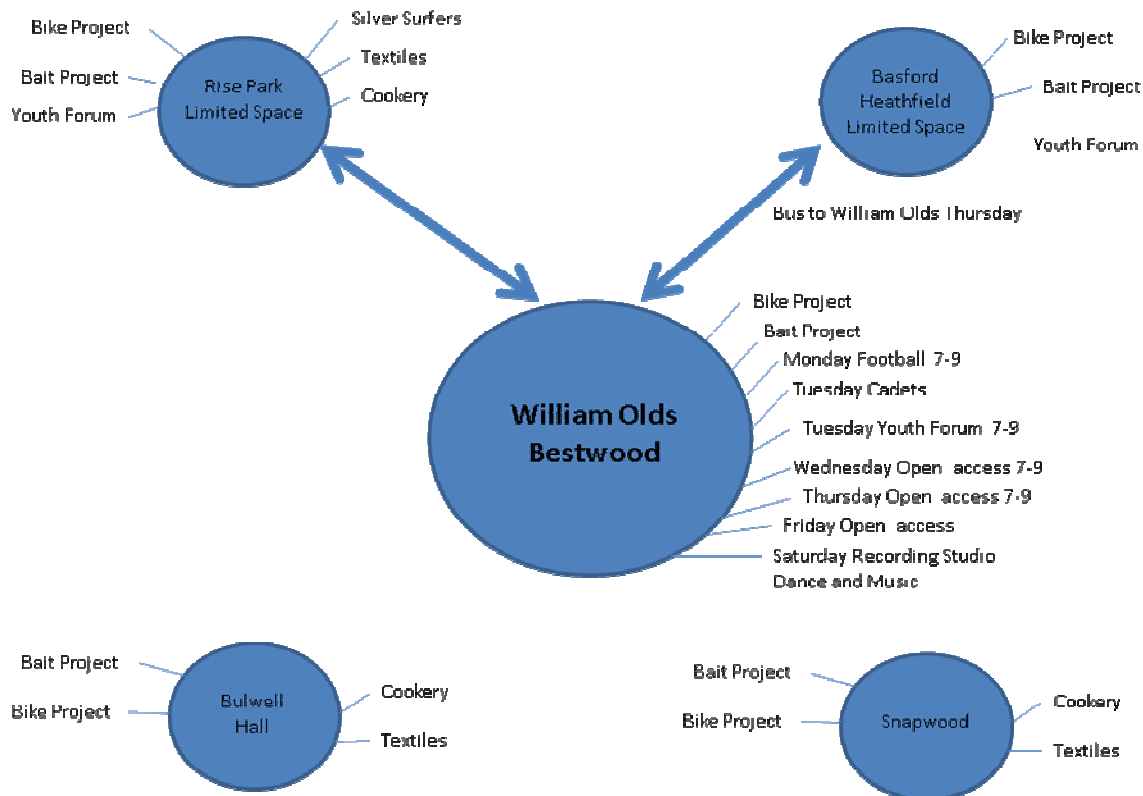
The aim of the project is to highlight the value of the internet and how it can be used to reduce social isolation.

Two young people will be coming in over half term to make tea and coffee and offering support to use the internet.

This is under discussion at the minute at how the IT equipment can be used and connected to the building.

The IT specialist has visited the centre and is working with the community association to find a solution in terms of Internet access

(Awaiting Grant)



In the coming year we hope to build on the solid foundations of the past 12 months. We are now actively seeking funding to run a number of significant programmes across area One and Two. We want to build our profile on the estates, increase the volunteer base and get more local people involved in organising and benefitting from our activities.

We are looking at developing the model and replicating it at other buildings across the areas.

A key aim of this project is to engage with young people that do not traditionally engage with people in authority. We have a clear target audience who we intend to reach our aim is to be as inclusive as possible. We want to promote the event in a way that attracts the type of audience we want to reach so we will use a variety of means of engagement.

As you can see from the last month we are making great progress and now expanding the provision into the wider areas with external monies.

We are in talks with the family Community Team to look at providing more youth Engagement at Bulwell Riverside Building.

This page is intentionally left blank

AREA 1 COMMITTEE (Bulwell Ward & Bulwell Forest Wards) 19 February 2014

Title of paper:	Environmental Submissions From Nottingham City Home (NCH)	
Director(s)/ Corporate Director(s):	Report of Chief Executive , Nottingham City Homes	Wards affected: Bulwell Ward
Report author(s) and contact details:	Nicky Jarvis – Tenancy & Estate Manager NCH Tel: 0115 8833797 nicky.jarvis@nottinghamcityhomes.org.uk	
Other colleagues who have provided input:	Housing Patch Managers: Gill Hames,	
Relevant Council Plan Strategic Priority: (you must mark X in the relevant boxes below)		
World Class Nottingham		
Work in Nottingham		
Safer Nottingham		x
Neighbourhood Nottingham		x
Family Nottingham		
Healthy Nottingham		x
Leading Nottingham		
Summary of issues (including benefits to citizens/service users):		
<p>This report informs the Committee of the schemes requested by residents of NCH properties and residents living within the environment of NCH properties and NCH Staff from the Housing Revenue Fund</p> <p>To provide extra security and safety and wellbeing to the residents of Bulwell and Bulwell Forest.</p> <p>This report proposes that the Area Committee approve the schemes.</p>		
Recommendation(s):		
1	That the committee consider and approve the schemes listed in Bulwell Ward (Appendix 1).	

1. BACKGROUND

The remaining funds available for Area Committee for Bulwell Ward are outlined in the table below

Area	Ward	NCH Properties Per Ward	Remaining Budget Allocation 2013-14
1	Bulwell	2585	£24059.00

The proposed schemes must fit at least one of the following criteria;

- Improve Security of Tenants & Leaseholders (eg door entry, lighting, fencing, garage sites).
- Improve the Environment for Tenants & Leaseholders (eg dealing with graffiti, reducing anti-social behaviour, parking issues, drying area resurfacing).
- Improve Spaces for Tenants & Leaseholders (eg installation of community facilities or areas on land under NCH management).

2. REASONS FOR RECOMMENDATIONS (INCLUDING OUTCOMES OF CONSULTATION)

Suggestions for schemes have come from a number of sources including tenants, leaseholders, tenants and residents groups, elected Members, Local Area Group meetings, Ward walks, Housing Patch Managers and Neighbourhood Development Officers

3. OTHER OPTIONS CONSIDERED IN MAKING RECOMMENDATIONS

A number of schemes have been submitted; however the available funding does not cover all of the proposals in all wards. The Housing environmental schemes not proposed will be carried forward for 2014-15 for consideration.

4. FINANCIAL IMPLICATIONS (INCLUDING VALUE FOR MONEY/VAT)

Nottingham City Homes has provided quotations for the proposed works via an agreed competitive tendering process.

Our contractors are procured based on value for money, quality of works and health & safety. The process of procurement, which was completed earlier, last year for the next few years has been completed for the delivery of environmental schemes throughout the city.

Thomas Bow won the contract for ground / general building work and Rushcliffe Fencing won the contract for fencing and gating works. These are both local contractors employing local people; including apprentices.

Where we are unable to use one of our procured contractors we will obtain 3 quotations to ensure we get value for money. All our schemes have to adhere to financial regulations and this requires us to obtain 3 quotations for any schemes with a value over £500.00.

5. RISK MANAGEMENT ISSUES (INCLUDING LEGAL IMPLICATIONS AND CRIME AND DISORDER ACT IMPLICATIONS)

To ensure local development in decision-making the Area Panel has been actively involved in the process. Ward members and local tenant and resident groups have also been consulted.

The programme will enable a series of improvements to take place that will improve security, spaces and the environment for local people.

The funds available are limited and are targeted at the most vulnerable tenants in the area within the criteria set out at section 1 of this report.

6. EQUALITY IMPACT ASSESSMENT (EIAs)

This report does not include proposals for new or changing policies, services. However, these proposals aim to improve the quality of lives and wellbeing for residents.

7. LIST OF BACKGROUND PAPERS OTHER THAN PUBLISHED WORKS OR THOSE DISCLOSING CONFIDENTIAL OR EXEMPT INFORMATION

None

8. PUBLISHED DOCUMENTS REFERRED TO IN COMPILING THIS REPORT

None

Appendix 1 Bulwell Ward

Ward/Location	Details of proposal	Issues	Estimated costs	Estate star rating
Submitted for approval				
Bulwell Ward Fencing Totley Close	Totley Close is currently under development into a play area through the Tenant and Resident Group. There is a community centre next to the area which is used as a boxing club.	This proposal is requesting a fence to divide the boxing club from the play area.	£2,975.34	3 Star

Bulwell and Bulwell Forest Area Committee - 19th February 2014

Title of paper:	Area Committee Finance and Delegated Authority	
Director(s)/ Corporate Director(s):	Andy Vaughan Director of Neighbourhood Services	Wards affected: Bulwell and Bulwell Forest
Report author(s) and contact details:	Celia Knight Neighbourhood Development Officer – Bulwell Forest celia.knight@nottinghamcity.gov.uk Tel 0115 8833729	
Other colleagues who have provided input:	Anita Winter Accountancy Support Officer - Finance anita.winter@nottinghamcity.gov.uk Tel 0115 8763714	
Date of consultation with Portfolio Holder(s) (if relevant)	Not relevant	
Relevant Council Plan Strategic Priority:		
Cutting unemployment by a quarter		<input type="checkbox"/>
Cut crime and anti-social behaviour		<input checked="" type="checkbox"/>
Ensure more school leavers get a job, training or further education than any other City		<input type="checkbox"/>
Your neighbourhood as clean as the City Centre		<input checked="" type="checkbox"/>
Help keep your energy bills down		<input type="checkbox"/>
Good access to public transport		<input type="checkbox"/>
Nottingham has a good mix of housing		<input type="checkbox"/>
Nottingham is a good place to do business, invest and create jobs		<input type="checkbox"/>
Nottingham offers a wide range of leisure activities, parks and sporting events		<input checked="" type="checkbox"/>
Support early intervention activities		<input type="checkbox"/>
Deliver effective, value for money services to our citizens		<input checked="" type="checkbox"/>
Summary of issues (including benefits to citizens/service users):		
This report advises the Area Committee of the use of delegated authority by the Director of Communities and provides an up to date finance report.		
Recommendation(s):		
1	That the Area Committee note the actions agreed by the Director of Neighbourhood Services in respect of projects and schemes within Area 1, detailed in Appendix A.	

1. REASONS FOR RECOMMENDATIONS

- 1.1 Records detailing Members spending decisions and consultation are shown in the attached Appendix. In accordance with the Constitution the Area Committee is required to note spending decisions taken by Ward Members. This report outlines the spending decisions since the report taken to the Area Committee Meeting on November 20th 2013

2. BACKGROUND (INCLUDING OUTCOMES OF CONSULTATION)

- 2.1 This action follows the arrangements established by the Executive Board to allow for spending approvals through individual Members budget allocations and Area Committee Finances.

3. OTHER OPTIONS CONSIDERED IN MAKING RECOMMENDATIONS

- 3.1 Not to provide the funding outlined in Appendix 1 but the funding requested will provide additional services or benefit to residents of Bulwell and Bulwell Forest wards.

4. FINANCIAL IMPLICATIONS (INCLUDING VALUE FOR MONEY/VAT)

- 4.1 Members had an individual allocation for 2013/14 of £5,000. Bulwell Ward was also granted an additional sum of £15,993 under the heading - Indices of Multiple Deprivation (IMD) funding.
- 4.2 The full balance has not been allocated. Further projects will be reported to a subsequent committee.

5. RISK MANAGEMENT ISSUES (INCLUDING LEGAL IMPLICATIONS AND CRIME AND DISORDER ACT IMPLICATIONS)

- 5.1 These arrangements provide transparency and regulation to the spending of individual Member's allocation.
- 5.2 The funds allocated by Area Committee are used to address diverse needs from various sections of the community and reduce inequalities.

6. EQUALITY IMPACT ASSESSMENT

Has the equality impact been assessed?

Not needed (report does not contain proposals or financial decisions) X

7. LIST OF BACKGROUND PAPERS OTHER THAN PUBLISHED WORKS OR THOSE DISCLOSING CONFIDENTIAL OR EXEMPT INFORMATION

- 7.1 Delegated authority for each scheme listed in Appendix A is held by the Committee Section.

8. PUBLISHED DOCUMENTS REFERRED TO IN COMPILING THIS REPORT

Executive Board – 20 May 2008 – Ward Member Budgets
Bulwell and Bulwell Forest Area Committee – 22nd May 2013
Bulwell and Bulwell Forest Area Committee – 18th September 2013
Bulwell and Bulwell Forest Area Committee – 20th November 2013

APPENDIX A

Bulwell Ward Budget Allocations since last report

Schemes: Bulwell Ward	Councillor(s)	Amount (total)
Bulwell and Rise Park Xmas Lights	Hartshorne, Klein, Morris	£3600
Bulwell Public Toilets Sunday Opening 2013	Hartshorne, Klein, Morris	£1980
Healthy Living Centre Tables	Hartshorne, Klein, Morris	£252
Main St Litter Bins	Hartshorne, Klein, Morris	£1500
BMX Track Water Supply	Hartshorne, Klein, Morris	£1700
Army Cadets Duke of Edinburgh Award equipment	Hartshorne, Klein, Morris	£300
St Mary's School Carpet	Morris	£59
Bulwell Bogs Heritage Trail	Hartshorne, Klein, Morris	£1980

The following have received Councillor support in principal, but either further information is awaited from the organisation, the application is being assessed or awaiting Delegated Authority Approval; None

Balance Brought Forward 12/13	£39236
Councillor Funding 13/14	£15000
Deprivation Funds	£15993
Total Funds	£70229
Allocated 13/14	£26252
De-committed Schemes	£6783
Uncommitted Funds after Allocated Schemes	£50760

Bulwell Forest Ward Budget Allocations since last report

Schemes: Bulwell Forest Ward	Councillor(s)	Amount (total)
Bulwell and Rise Park Xmas Lights	Campbell, Clark and McDonald	£3600
Army Cadets Duke of Edinburgh Equipment	Campbell, Clark and McDonald	£300
Jason Spencer Trust	Campbell, Clark	£200
Rise Park Football Club	Campbell, Clark and McDonald	£269
Bulwell Forest Recreation Ground Equipment	Campbell, Clark, McDonald	£4813

The following have received Councillor support in principal, but either further information is awaited from the organisation, the application is being assessed or awaiting Delegated Authority Approval;-Bulwell Athletic Football Club £220, Bulwell Forest Community Garden £900, Rise Park Community Association £2000, Rise Park Community Association noticeboard £500, Southglade ParkLive 2014 £1500, Southglade Park Library Youth Project £275, Top Valley Community Association £157. (These schemes are not included in the table below)

Balance Brought Forward 12/13	25,847
Councillor Funding 13/14	15,000
Deprivation Funds	0
Total Funds	40,847
Allocated 13/14	11970
Decommited Schemes	184
Uncommitted Funds after Allocated Schemes	£29061

Area 1 Committee (Bulwell and Bulwell Forest) Ward Performance February 19th 2014

Title of paper:	WARD PERFORMANCE REPORTS	
Director(s)/ Corporate Director(s):	Andy Vaughan Director of Neighbourhood Services	Wards affected: Bulwell and Bulwell Forest
Report author(s) and contact details:	Heidi May - Locality Manager heidi.may@nottinghamcity.gov.uk Celia Knight – Neighbourhood Development Officer celia.knight@nottinghamcity.gov.uk 0115 8833729 Suki Shergill – Neighbourhood Development Officer sukhbir.shergill@nottinghamcity.gov.uk 0115 8833728	
Other colleagues who have provided input:	Dave Halstead Head of City Services dave.halstead@nottinghamcity.gov.uk Christine Oliver Senior implementation Manager Crime and Drugs Partnership christine.oliver@nottinghamcity.gov.uk	
Date of consultation with Portfolio Holder(s) (if relevant)	Not applicable	
Relevant Council Plan Strategic Priority:		
Cutting unemployment by a quarter		<input checked="" type="checkbox"/>
Cut crime and anti-social behaviour		<input checked="" type="checkbox"/>
Ensure more school leavers get a job, training or further education than any other City		<input checked="" type="checkbox"/>
Your neighbourhood as clean as the City Centre		<input checked="" type="checkbox"/>
Help keep your energy bills down		<input checked="" type="checkbox"/>
Good access to public transport		<input checked="" type="checkbox"/>
Nottingham has a good mix of housing		<input checked="" type="checkbox"/>
Nottingham is a good place to do business, invest and create jobs		<input checked="" type="checkbox"/>
Nottingham offers a wide range of leisure activities, parks and sporting events		<input checked="" type="checkbox"/>
Support early intervention activities		<input checked="" type="checkbox"/>
Deliver effective, value for money services to our citizens		<input checked="" type="checkbox"/>
Summary of issues (including benefits to citizens/service users):		
<p>1.1 This report outlines the community engagement which has taken place and is planned in Bulwell and Bulwell Forest Wards. It also outlines the ward priorities for both wards and the actions which have been undertaken to address those priorities. The reports provide summary updates on the following key themes:</p> <ul style="list-style-type: none"> • Ward priorities • Community engagement • Finance • Safer theme - Crime and anti social behaviour (ASB) • Neighbourhood theme – Cleansing and Environmental issues • Working theme - Unemployment rates • Housing • Community Protection • Fire • Health Theme – local health priorities <p>The following brief summary by the respective Ward NDO highlights the key issues:</p>		

Bulwell Ward – Suki Shergill Temporary Neighbourhood Development Officer

Recent successes include :-

- Reducing shop thefts partnership (Nottingham City Homes, PCSO, and Neighbourhood Management) event in December took place outside Tesco in which information on food banks, hardship fund, Welfare rights, and housing advice was provided to struggling residents. A petition to prevent and raise awareness of street drinking also took place alongside providing free timer switches to reduce burglaries.
- A range of local organisations were involved with the Bulwell Christmas Festival raising funds for their work and promoting their services.
- A range of partners were involved in Community engagement on Crabtree estate which took place in November, December and January, resulting in volunteer recruitment and providing information to local residents of a range of services available including reducing fly tipping and dog fouling.

Emerging issues include :-

- Dog fouling around the Springfield Retail Park has emerged as an issue. A leaflet drop to raise awareness and highlighting a commitment to tackle the issue is taking place.
- Domestic Violence has re-emerged as an issue and a stall will be held in February to raise awareness, promote the Man Enough campaign and provide support to victims.
- The process of relocating the Credit Union.

The issues which the neighbourhood Action team is focusing on include:-

- Reducing domestic violence in the area by raising awareness and providing information to victims and promoting the Man enough Campaign.
- Providing employment opportunities to 16 to 24 year olds via a Road show to be held at the Red Lion Centre.
- Continue community engagement in the Crabtree area.

The figures given below show some key statistical points for this quarter

- Domestic violence has increased by 5% (an increase of 4). Compared to 2012/13 it has increase from 87 to 91.
- There is a decrease in Burglary which dropped to -23.36%. Compared to December 2012 19 burglaries dropped to 8 by December 2013.
- Hate crime rose by 25% which rose from 8 to 10 as compared to December 2013 to January 2014.
- Fly tipping increased by 40% in comparison to December 2012 183 cases to December 2013 257 (up by 74)

Bulwell Forest Ward – Celia Knight Neighbourhood Development Officer

Recent successes include:-

- Various community bulb plantings have taken place including one involving children from Cantrell Primary School, the police dogs team, residents from Colin Broughton Court sheltered housing scheme and Nottingham City Council.
- A range of local organisations were involved with the Bulwell Christmas Festival raising funds for their work and promoting their services.
- In December, the ward councillors visited Highbury Hospital, Palmwood Court, Chatham Court and Fairway View to ensure that residents and staff in those establishments had the opportunity to meet councillors and raise any issues within Bulwell Forest.

Emerging issues include:-

- 100 people attended a drop in session regarding the proposed new small housing development on the former Kwik Save site at Rise Park. A further opportunity for residents to find out more will take place when a planning application is being submitted by

Nottingham Community Housing Association.

- Dog fouling around the Highbury Vale area has re emerged as an issue with the darker nights. Ongoing work is taking place to address this and a resident was fined in December for not clearing up after her dog on Piccadilly.
- Commercial fly tipping by out of city companies in Bulwell and Bulwell Forest wards has resulted in a meeting taking place between officers from Nottingham City Council and a neighbouring authority.

The issues which the Neighbourhood Action Team is focussing on include;-

- Reduction in burglaries eg through the distribution of timer switches to vulnerable people to enable them to have a light on whilst out of the house and information leaflets
- Reducing the amount of dog fouling in public places, particularly around the Highbury Vale area
- Information sharing regarding the mental health services which are available to local residents.

The figures given below show some key statistical points for this quarter

- Criminal Damage has increased by 81.82% (an increase of 9 offences) compared to December 2012 although there is an overall decrease in the figures for the year to date of 4.2%
- Shop theft increased by tow offences compared to December 2012 and overall there is an increase of one offence in the year to date.
- There is a decrease of 57% in the number of deliberate fires in the year to date compared to the previous year due possibly to the wet weather conditions
- There were 11 incidents of graffiti which is an increase of 4 compared to the same month last year

Recommendation(s):

1 | Area Committee note and comment on the Ward Performance Reports

1. REASONS FOR RECOMMENDATIONS

- 1.1 Ward performance reports provide a descriptive and statistical picture of what is happening at a ward level and invite community representatives to comment, debate, and challenge and identify how they can add value to improve their neighbourhoods.
- 1.2 Ward performance reports also monitor progress in the wards and act as a catalyst for debate about the key performance issues impacting upon the ward on a quarterly basis.

2. BACKGROUND (INCLUDING OUTCOMES OF CONSULTATION)

- 2.1 Neighbourhood Working has been important for a number of years in Nottingham as a means of engaging better with citizens and to drive forward service improvement.
- 2.2 The Nottingham Plan has a goal that 'public service delivery will be better integrated and appropriately devolved, ensuring more accessible and responsive services for all and giving residents more control over what happens in their neighbourhoods'; the Ward Performance reports help to support this.
- 2.3 The Ward Performance Reports captures work at a local level to support the Nottingham Plan; it is a short summary of key updates on priorities and issues in the ward. More detailed implementation plans sit behind the report

such as the Ward Action Plan, Neighbourhood Action Team's Action Log, Crime Drug Partnership (CDP) plans and other partner's implementation plans.

2.4 The Ward Performance Reports are co-ordinated by Neighbourhood Development Officers every quarter, with the data analysis undertaken by the CDP.

2.5 All three Locality boards now have Nottingham City Council Directors as Chairs. The chair for the North Locality is Mark Gannon, Director of Information Technology

The focus for all the Locality Boards will be on Crime and for the north, in particular Theft from Shops, Violence including domestic violence, and Criminal Damage.

The Locality Board will focus on reducing crime and together with partners will take a proactive approach. The board will be reviewing evidence including statistics every month to ensure good progress.

3. OTHER OPTIONS CONSIDERED IN MAKING RECOMMENDATIONS

3.1 None

4. FINANCIAL IMPLICATIONS (INCLUDING VALUE FOR MONEY/VAT)

4.1 None

5. RISK MANAGEMENT ISSUES (INCLUDING LEGAL IMPLICATIONS AND CRIME AND DISORDER ACT IMPLICATIONS)

5.1 None

6. EQUALITY IMPACT ASSESSMENT

Has the equality impact been assessed?

Not needed (report does not contain proposals or financial decisions)

No

Yes – Equality Impact Assessment attached

Due regard should be given to the equality implications identified in the EIA.

7. LIST OF BACKGROUND PAPERS OTHER THAN PUBLISHED WORKS OR THOSE DISCLOSING CONFIDENTIAL OR EXEMPT INFORMATION

7.1 Neighbourhood Working Framework 2012 CLT report

8. PUBLISHED DOCUMENTS REFERRED TO IN COMPILING THIS REPORT

8.1 None

Bulwell Ward Priorities

Theme	Priorities	Key Actions	Outcomes
Safer	Domestic Abuse	Dec 13 or Jan 14 - To deliver a women's wellbeing event	NM to pick up updates /DV in January
	<ol style="list-style-type: none"> 1. To raise awareness of the issues 2. To promote support networks 3. To provide/promote training opportunities for officers and community reps 	<p>Autumn 13 - Promote the man enough campaign in Bulwell Market</p> <p>Autumn 13 - Street Pastors to investigate how to promote the man enough campaign through their work (link in with Katy Follows)</p> <p>Autumn 13 Encourage local fathers group to promote the man enough campaign</p> <p>October 13 – CDP to investigate possibility of producing publicity material which can safely be taken into homes.</p> <p>October 13 – CDP to provide information regarding man enough pledge cards to be placed under Xmas trees in public places.</p> <p>October 13 – Publicity material to be widely distributed</p>	<p>CDP running Man Enough Campaign across 20 bus stops in the city from 17th to 31st December</p> <p>December – CDP Tracy Lyons to distribute black/red cards in libraries and contact equation for cards.</p> <p>Schools in Bulwell currently running DV awareness including the academy</p> <p>May 13 - Action plan in place and to be further developed via NATs</p>
	Current Neighbourhood Policing Priority: Anti-social behavior focusing on open space congregation around Ravensworth Road,	<p>Dedicated patrols within the area between Nottinghamshire Police and City council CPO's.</p> <p>Daily patrols are in place to try and reduce ASB associated calls - majority of calls are after midnight and are noise</p>	<p>Eviction notices have been served on one occupant and this is proceeding</p> <p>Identified overgrown gardens have been cleaned up and work continues to</p>

Page 66	Merchant Street and Rock Street.	related.	<p>improve the area for residents</p> <p>There has been 2 street sweeps done in conjunction with city council to try and tidy up the street which has partially worked.</p> <p>Continuing enforcement action has been taken with bins being left out of the streets by CPO's. 1 FPN issued in July</p> <p>This priority will change in November. There will be enhanced patrols and activity towards the end of October.</p> <p>Clean Up operation took place in October with 11 tonnes of rubbish removed.</p>
	Bulwell LAG Priority – As above	As above	
	Reducing accidental and deliberately set fires	<p>Ensure Fire service is invited to all events</p> <p>Continue to deliver sessions in schools with Police and NCC. Safety Day taking place at Bulwell St Mary's on Nov. 19th</p>	<p>Vulnerable persons training given at officers Networking event</p> <p>Fire attending One Stop on Crabtree Farm</p> <p>Police have referred relevant residents through to the Fire Service</p> <p>St Johns Ambulance and Fire service meeting to discuss further actions and discuss collective approaches.</p>

Neighbourhoods	Reduce litter and dog fouling	<p>Ongoing - Continue to keep Lawton and Grindon as priority routes for Poover</p> <p>Ongoing - Improve promotion of FPNs</p> <p>Ongoing - See it Report scheme promoted and reporting encouraged</p> <p>Ongoing - Deliver school education sessions linking enviro crime, police and fire to every primary school in Bulwell ward</p>	<p>Residents have noticed the additional cleansing</p> <p>CPO's informing NAT officers when FPNs are issued enabling NDO's to forward this on via community networks 3 dog fouling FPNs issued in September in Bulwell Ward.</p> <p>Crabtree and Springfield Schools have been involved with this project to date. Other schools will follow.</p>
Page 67	Community Engagement	Identify gap areas and deliver target engagement across the year	Meeting took place in July to discuss delivering a session on Crabtree. provisionally involving Fire, police, Job Centre NCN, City Services, Parent group, father's grp, BCTL, NCH and more. Door knocking took place in October
Families	School Readiness	FCT & Toy Library to talk through priority to NAT at Oct meeting and identify ways in which NAT members can contribute and support this issue	Parental involvement session delivered in October. Ongoing meetings take place with relevant agencies. Get set for school sessions are taking place within schools co-ordinated by the Toy Library and Family and Community Team. Named health visitor appointed for the children's centre (October).
Health	<p>Healthy Eating</p> <p>To raise awareness of nutritional information with a focus on schools.</p>	<p>The healthy eating programme will be promoted through the NCC youth and play sessions</p> <p>Physical activity will be offered as part of every youth and play NCC session.</p> <p>The Unicef breastfeeding campaign will continue to be promoted.</p>	Public health nutritionists have expressed an interest in running nutrition information within schools. Cantrell, Bulwell St Mary's, Rufford, Snapewood and Springfield run the Great project.

		<p>Information on healthy relationships will continue to be promoted through the exchange programme with French young people. Run 6 weekly cooking on a budget.</p>	<p>Funded via councillors and Springfield is running successfully</p>
	Mental Health & Wellbeing	Promote local services	<p>Library project, Books on Prescription has been introduced to the Riverside Library. 30 titles available on self help</p>
<p>Working</p> <p>Page 68</p>	<p>Mapping and promoting local education and employment opportunities with a focus on youth unemployment</p>	<p>Job Centre Plus to give a talk on local initiative for 18 -24 yr olds at Sept NAT</p> <p>NAT members to agree ways in which we can support JC+ to promote these initiatives</p> <p>Neighbourhood Management and JCP to work together to run an employment fair in 2014.</p>	<p>JobCentre Plus information was taken to a NAT meeting.</p> <p>October – Neighbourhood Management and Economic Development Team have visited some local businesses to promote the apprenticeship scheme.</p> <p>A volunteer’s course was taking place at Bulwell Forest Children’s Centre on November 18th.</p>
<p>Cross Cutting</p>	Welfare Reform impacts	<p>NAT members to promote better the Credit union services</p> <p>All NCH staff to advice tenants on changes to benefits where relevant and signpost tenants with more complex queries to the Financial Inclusion Team</p> <p>Bulwell EAZ to highlight as a priority at EIP Management meeting to raise awareness to Headteacher of likely impacts</p>	<p>Bulwell Credit Union closed on August 31st 2013. New premises being sought</p> <p>Councillor Morris to raise with Jon Collins</p> <p>Home swap session run on Mon 10th June at Riverside. Well attended</p>

Community Engagement

Ward Walks

Area/ Estate	Date/ Time	Meeting Point
Bulwell Hall	September 2nd	Healthy Living Centre, Lawton Drive

Community Meetings

Group	Date	Venue
Rufford Tenants and Residents Association	September 25th	Duchess Gardens
Rufford Tenants and Residents Association Meeting	October 30th	Duchess Gardens
Bulwell Hall Tenants and Residents Association	November 13th	Healthy Living Centre

Events Delivered

Event	Lead Partners	Date/ Time	Venue
Crabtree engagement	Neighbourhood Management, Police, One Vision, Nottingham City Homes	October 16th	Crabtree estate
Apprenticeship Scheme Promotion	Neighbourhood Management, Economic	October 9th	Bulwell Industrial estate and Bulwell Town Centre

	Development		
Pre budget consultation	Neighbourhood Management, Councillors, One Vision	October 18th	Bulwell Market Place
Crabtree engagement	Neighbourhood Management, Police, One Vision, Nottingham City Homes	November 13th	Crabtree estate
Bulwell Xmas Festival	Various	December 2nd	Bulwell Riverside and Bulwell Market Place
Partnership Event	Neighbourhood Management , Police, NCH	December 20 th	Tesco Bulwell Centre

Future Events and Activities Planned

Event	Lead Partners	Date/ Time	Venue
Crabtree Engagement	Neighbourhood Management, Police, One Vision, Nottingham City Homes	January 7th	Crabtree estate
Budget Consultation	Councillors and neighbourhood management	January 24 th 10am - 12	Bulwell Riverside

Finance

Ward Councillor Budgets

Total Amount allocated this period £11,371

Budget Remaining Unallocated (inc of 2012-13 allocation) £50,760

Area Capital Fund

Total Amount allocated this period (approved at November 2013 Area Committee) £24,901

Budget Remaining Unallocated (inc of 2012-13 allocation) £109,153

Others – Section 106, NCH Environmentals, Other Funding

£55,473 NCH environmentals approved at November 2013 Area Committee



Bulwell NAT Report

January 2014



Ward Summary

Crime data is shown below for both the current month compared to last year and the year to date.

BULWELL	Dec-12	Dec-13	Change	% Change	Prev YTD	YTD	Change	% Change
Autocrime	9	10	1	11.11%	86	92	6	6.98%
Burglary	19	8	-11	-57.89%	107	82	-25	-23.36%
Burglary Other	4	3	-1	-25.00%	41	66	25	60.98%
Damage	17	21	4	23.53%	276	299	23	8.33%
Drugs	4	4	0	0.00%	70	86	16	22.86%
Fraud	8	2	-6	-75.00%	36	14	-22	-61.11%
Other	5	5	0	0.00%	31	33	2	6.45%
Personal Robbery	5	2	-3	-60.00%	30	31	1	3.33%
Robbery Business		1	1	100.00%	6	4	-2	-33.33%
Sexual	4	1	-3	-75.00%	17	16	-1	-5.88%
Theft	33	39	6	18.18%	397	355	-42	-10.58%
Theft from Person	1		-1	-100.00%	30	21	-9	-30.00%
Threats	4	3	-1	-25.00%	36	51	15	41.67%
Violence	36	25	-11	-30.56%	273	278	5	1.83%
All Crime Total	149	124	-25	-16.78%	1436	1428	-8	-0.56%
ASB	65	59	-6	-9.23%	919	822	-97	-10.55%

The summary below shows only year to date figures, and in the case of public realm and fire data, will generally be a month in arrears.

Type	YTD 12/13	YTD 13/14	Volume +/-	% Change
Domestic Violence Crimes	87	91	4	5%
Night Time Economy Violence	20	11	-9	-45%
Hate Crime	8	10	2	25%
Deliberate Fires	33	35	2	6%
Cleanliness	80	85	6	7%
Graffiti	30	52	22	73%
Fly-Tipping	183	257	74	40%

Priorities & Targets

The North Locality has targets to reduce Criminal Damage, Shop Theft and Violence.

Performance against Targets is set out below for the Locality.

Locality Target Summary																
Locality	Crime Type	Apr-13	May-13	Jun-13	Jul-13	Aug-13	Sep-13	Oct-13	Nov-13	Dec-13	Jan-14	Feb-14	Mar-14	YTD	Proposed year end Position	+/- Target Position
North	Criminal Damage	146	141	127	132	167	134	134	126	125	130	130	130	1232	1623	-1
	Shop Theft	61	63	65	45	66	59	48	49	60	45	45	45	516	615	36
	Violence	163	165	197	188	171	148	141	146	153	140	140	140	1472	1864	28

Exception Reporting

Criminal Damage

Criminal Damage has shown an increase of 24% (4 more offences) compared to December 2012/13 and a comparable year to date increase of 8.3% (23 more offences). The table below shows the wards criminal damage reports on a monthly basis for the year to date, and compares them with the previous year to date.

The Table on page 6 shows that Bulwell has the highest number of recorded offences for Damage in the division.

Criminal Damage														
	Apr	May	Jun	Jul	Aug	Sep	Oct	Nov	Dec	Jan	Feb	Mar	Year Total	YTD
2011-12	41	36	34	39	32	38	47	47	26	28	34	31	433	340
2012-13	55	33	30	24	30	34	24	29	17	38	37	32	383	276
2013-14	33	23	31	32	43	35	39	42	21				299	299
Volume +/-	-22	-10	1	8	13	1	15	13	4					23
% Change on last year	-40%	-30%	3%	33%	43%	3%	63%	45%	24%					8.3%

Shop Theft

Although Shop Theft increased by 26% (5 more offences) compared to December 2012/13, the comparable year to date figure decreased by 4.1% (5 less offences). The table below shows the wards shop theft reports on a monthly basis for the year to date, and compares them with the previous year to date.

Shop Theft														
	Apr	May	Jun	Jul	Aug	Sep	Oct	Nov	Dec	Jan	Feb	Mar	Year Total	YTD
2011-12	24	26	30	20	41	32	28	21	19	20	21	20	302	173
2012-13	25	22	20	24	16	16	32	27	19	17	22	23	263	123
2013-14	17	17	17	20	21	26	20	24	24					118
Volume +/-	-8	-5	-3	-4	5	10	-12	-3	5					-5
% Change on last year	-32%	-23%	-15%	-17%	31%	63%	-38%	-11%	26%					-4.1%

Violence

Bulwell is a High Impact Ward with a monthly target of 28 violence offences per month.

Violence decreased by 30.56% (11 less offences) compared to December 2012/13. The comparable year to date figure shows an increase of 1.8% (5 more offences). The table below shows the wards violence reports on a monthly basis for the year to date, and compares them with the previous year to date.

Violence														
	Apr	May	Jun	Jul	Aug	Sep	Oct	Nov	Dec	Jan	Feb	Mar	Year Total	YTD
2011-12	33	28	42	29	26	24	20	30	28	30	26	26	342	260
2012-13	32	26	24	25	37	30	26	37	36	29	17	37	356	273
2013-14	27	29	32	44	43	25	24	29	25				278	278
Volume +/-	-5	3	8	19	6	-5	-2	-8	-11					5
% Change on last year	-16%	12%	33%	76%	16%	-17%	-8%	-22%	-31%					1.8%

All Crime

Bulwell is a High Impact Ward with a monthly target of 155 crime offences per month.

Bulwell's crime statistics decreased by 16.78% (25 less offences) compared to December 2011/13. The Year to date figure also shows a decrease of 0.56% (8 less offences).

All Crime														
	Apr	May	Jun	Jul	Aug	Sep	Oct	Nov	Dec	Jan	Feb	Mar	Year Total	YTD
2011-12	207	179	203	190	204	194	187	184	131	157	163	163	2162	1679
2012-13	181	156	167	138	152	164	161	168	149	166	135	155	1892	1436
2013-14	138	130	166	185	195	159	159	172	124				1428	1428
Volume +/-	-43	-26	-1	47	43	-5	-2	4	-25					-8
% Change on last year	-24%	-17%	-1%	34%	28%	-3%	-1%	2%	-17%					-1%

A full breakdown of the crime rates for each ward can be found on page 6. This shows that Bulwell has the second highest number of recorded offences for theft and all crime. The ward also has the third highest number of recorded offences for personal robbery.

Micro Beat



There were 22 crimes within the Micro Beat in Bulwell in December 2013. These break down to:

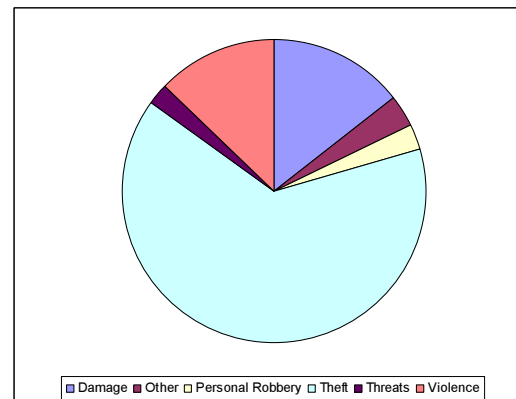
10 cases of theft from a shop, 6 cases other theft.

Individual cases of : Damage to a building other than dwelling, Robbery of personal property, Harassment/Alarm/Distress, Assault with injury, Common assault and Other crime not listed.

In the year to date, the Micro Beat area has suffered 186 offences (April to December 2013). Theft offences accounted for the greatest volume of crime (65%, 120 offences).

Criminal Damage offences accounted for the second largest volume of offences 15% (27 offences) within the Micro Beat in the year to date See Chart 1 for a full breakdown of offences.

Chart 1: YTD crimes by offence group in the Micro Beat area.



Crime Figures

Crime Types by Rate (per 1000 of population) of the 20 Wards – Figures are Year to Date 2013/14

WARD	ALL CRIME	AUTOCRIME	BURGLARY	DAMAGE	PERSONAL ROBBERY	THEFT	VIOLENCE
ARBORETUM	99.06	5.74	9.60	12.56	5.47	15.52	24.85
ASPLEY	67.76	5.96	5.45	11.80	0.91	10.55	17.25
BASFORD	57.44	7.10	5.43	9.87	1.23	10.43	13.39
BERRIDGE	62.46	7.24	5.84	9.17	1.07	14.21	12.49
BESTWOOD	48.23	3.46	5.19	9.91	1.07	6.21	11.58
BILBOROUGH	56.87	6.73	5.36	10.24	0.95	8.99	12.68
BRIDGE	64.90	3.59	1.64	8.31	1.23	26.04	11.69
BULWELL	88.38	5.69	5.08	18.51	1.92	21.97	17.21
BULWELL FOREST	53.84	3.53	4.04	10.06	1.47	14.25	10.65
CLIFTON NORTH	41.43	3.03	4.11	8.69	1.16	5.66	8.46
CLIFTON SOUTH	41.44	2.51	5.31	7.10	0.86	7.31	10.76
DALES	53.28	4.56	2.73	10.08	0.49	11.36	11.54
DUNKIRK AND LENTON	67.95	10.26	6.68	6.41	0.73	21.43	9.43
LEEN VALLEY	54.48	4.58	5.61	8.78	1.68	11.12	10.00
MAPPERLEY	56.42	7.64	4.48	7.83	0.57	10.73	10.67
RADFORD AND PARK	58.59	8.17	6.43	5.41	1.89	16.69	8.93
SHERWOOD	62.09	5.64	5.97	6.49	1.82	21.41	11.16
ST ANNS	66.80	4.65	3.79	12.10	3.79	7.30	18.61
WOLLATON EAST AND LENTON ABBEY	35.57	3.11	5.73	3.62	0.30	12.86	3.52
WOLLATON WEST	29.03	4.75	4.14	3.39	0.27	7.67	2.85
WARD AVERAGE	58.30	5.40	5.13	9.02	1.44	13.09	11.89

All ASB Figures

All ASB by Rate (per 1000 of population) of the 20 Wards)

WARD	RATE (PER 1000 OF POP.) Dec 2013
ARBORETUM	6.82
ASPLEY	3.40
BASFORD	3.64
BERRIDGE	2.36
BESTWOOD	3.64
BILBOROUGH	3.22
BRIDGE	3.08
BULWELL	3.65
BULWELL FOREST	2.79
CLIFTON NORTH	2.25
CLIFTON SOUTH	2.01
DALES	3.95
DUNKIRK & LENTON	1.47
LEEN VALLEY	3.92
MAPPERLEY	2.02
RADFORD & PARK	2.14
SHERWOOD	1.62
ST ANNS	5.23
WOLLATON EAST & LENTON ABBEY	0.80
WOLLATON WEST	0.47
WARD AVERAGE	2.92

	Highest Rate
	Second Highest Rate
	Third Highest Rate

Fire

Table: Volume of Deliberate Primary and Secondary Fires by Ward

		Fire Data							
Locality	Ward	Nov-12	Nov-13	Volume +/-	% Change	Ytd 12-13	Ytd 13-14	Volume +/-	% Change
Central	Arboretum	2	0	-2	-100%	13	18	5	38%
	Berridge	7	3	-4	-57%	35	29	-6	-17%
	Dunkirk and Lenton	1	2	1	100%	5	7	2	40%
	Radford and Park	1	1	0	0%	24	14	-10	-42%
	Sherwood	0	3	3		9	15	6	67%
	Wollaton East and Lenton Abbey	0	0	0		6	6	0	0%
	Wollaton West	0	0	0		2	3	1	50%
Central Locality		11	9	-2	-18%	94	92	-2	-2%
North	Aspley	1	0	-1	-100%	45	34	-11	-24%
	Basford	4	2	-2	-50%	40	26	-14	-35%
	Bestwood	5	0	-5	-100%	31	37	6	19%
	Bilborough	3	2	-1	-33%	34	19	-15	-44%
	Bulwell	6	7	1	17%	60	56	-4	-7%
	Bulwell Forest	0	1	1		28	12	-16	-57%
	Leen Valley	3	2	-1	-33%	20	20	0	0%
North Locality		22	14	-8	-36%	258	204	-54	-21%
South	Bridge	0	2	2		10	14	4	40%
	Clifton North	1	2	1	100%	10	9	-1	-10%
	Clifton South	2	1	-1	-50%	17	25	8	47%
	Dales	1	1	0	0%	6	13	7	117%
	Mapperley	2	0	-2	-100%	14	10	-4	-29%
	St. Anns	2	1	-1	-50%	22	23	1	5%
South Locality		8	7	-1	-13%	79	94	15	19%
Division		41	30	-11	-27%	431	390	-41	-10%

Note: Where ward boundaries overlap with the City Centre fires that occurred in the City Centre have been **included** in the ward figures.

Community Protection

Data has been received from Community Protection and where postcodes have been listed these have been geo-coded and mapped to determine the Ward. All addresses relate to the address of the Perpetrator.

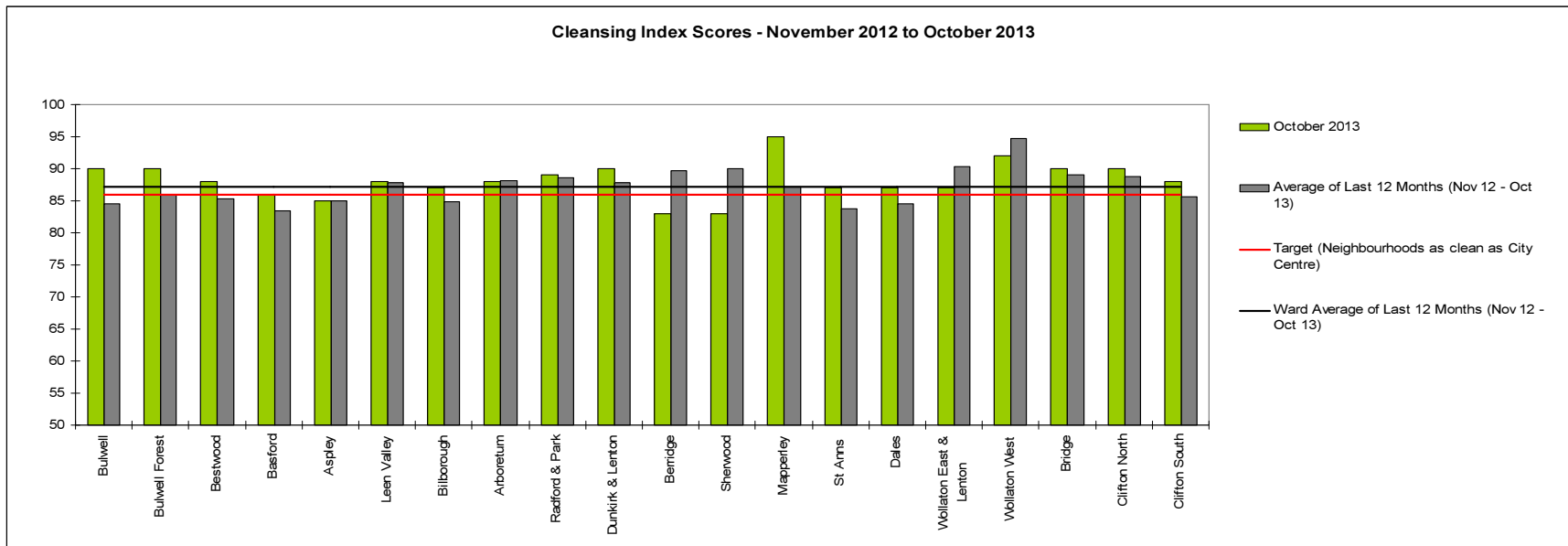
In December 2013 the following orders were issued:

- **1 Injunction for Drug Use**
- **1 Tenancy Termination in relation to an ASB**

For enquiries regarding Community Protection court outcomes please contact the Operational Manager for the locality.

Cleanliness Index

This graph shows the position of your ward compared to other Wards



The “neighbourhood as clean as the city centre” benchmark target on cleanliness is to achieve a score of 86% in every ward. The 86% target is shown in red in the above graph.

To calculate the Cleanliness Index (CI) an agreed number of transects are surveyed across an area covering a range of land types. Each site surveyed is awarded a cleanliness grade based on a 7 point scale from A to D where Grade A: – no litter, and Grade D: - heavily littered. The maximum possible score of 100 is achieved when all sites achieve Grade A.

The Code of Practice for Litter and Refuse (COPLAR) requires councils to strive to reach an ‘acceptable’ standard of cleanliness (grade B or better) across the Council area. Grade A is the ultimate goal and is how a site should be immediately after sweeping but is almost impossible to maintain for any length of time. For example, a grade A site is completely free of litter – one cigarette butt takes it down to B+.

To achieve the manifesto commitment of Neighbourhoods as clean as the City Centre a target of 86 is required as that was the CI for the City Centre in May 2011. To give some context if all areas surveyed achieved a grade ‘B’ standard, this would equate to a cleanliness index of 67.

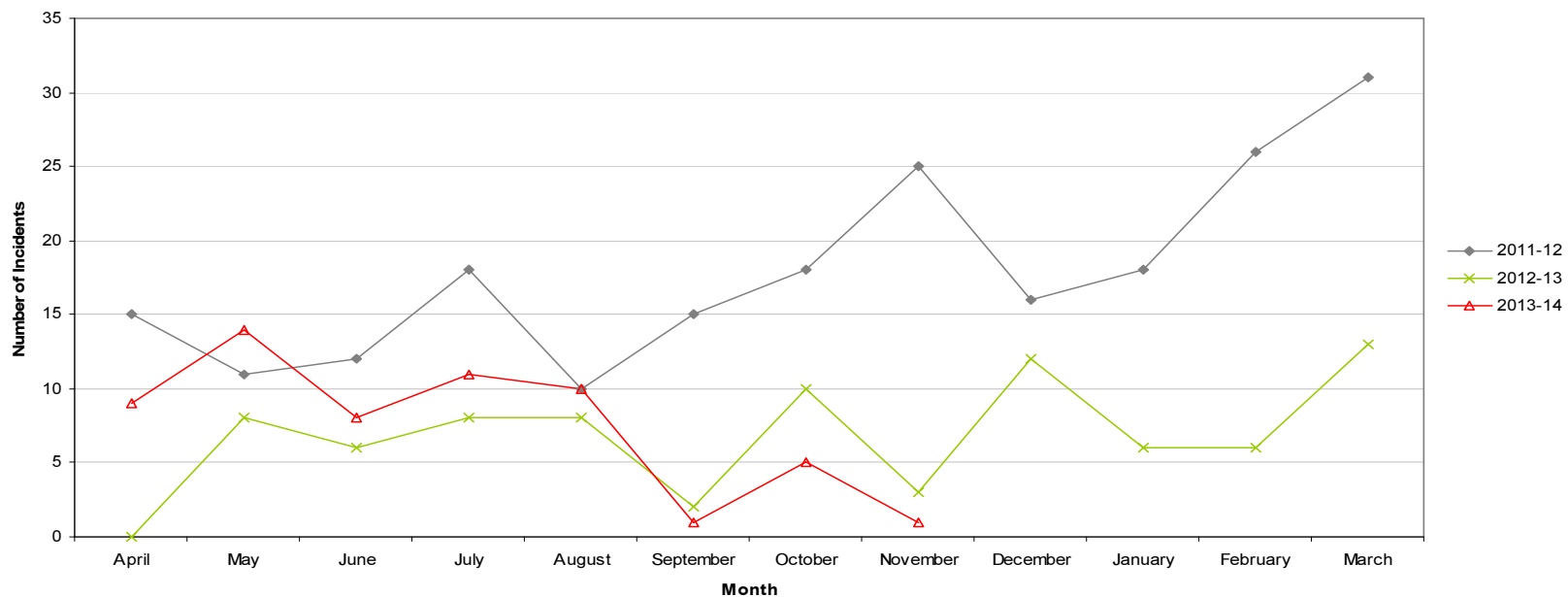
Cleanliness Figures provided by Neil Flaherty – Neighbourhood Services Directorate

Graffiti Reports

RED		
AMBER		
GREEN	1 incident	Decrease of 2

- All data refers to a comparison with the previous year's month
- It is proposed that performance over time graphs be used for each indicator
- Historic data for comparison is not available for dog fouling

Incidents of Graffiti - Bulwell

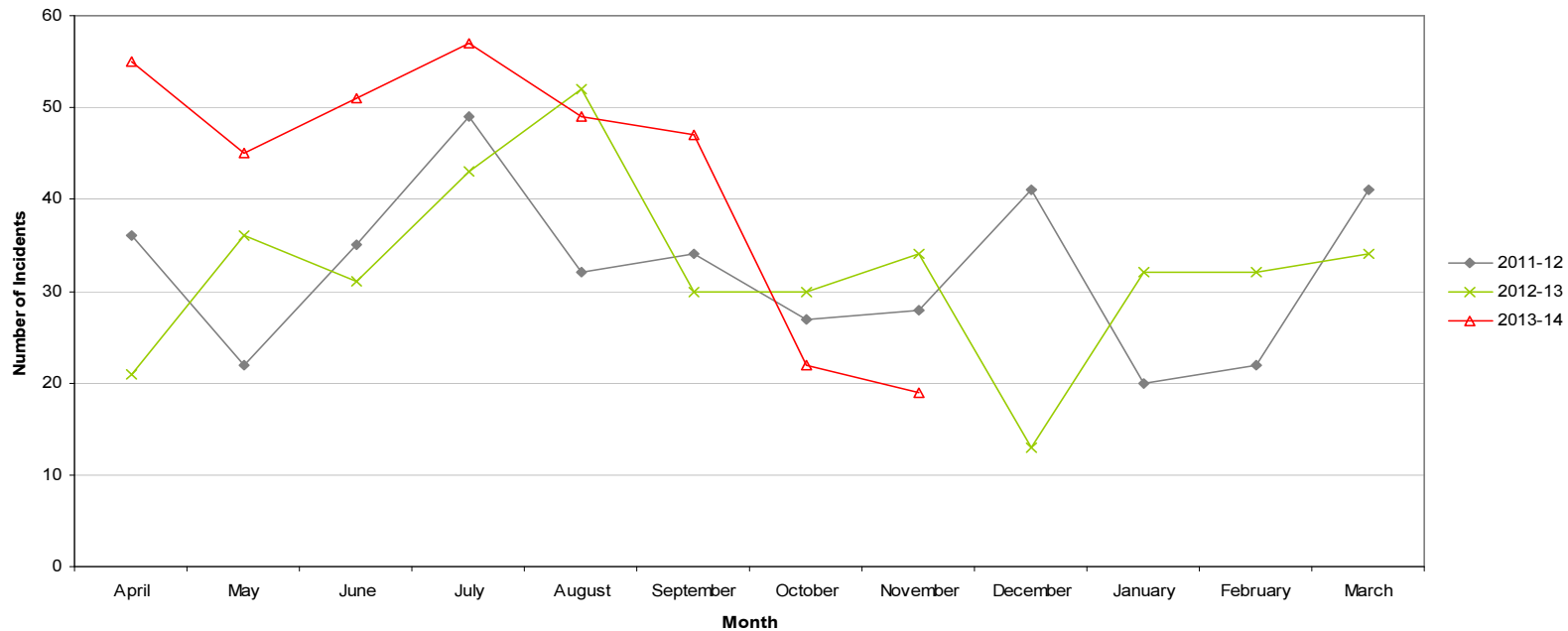


Fly Tipping

RED		
AMBER		
GREEN	19 incidents	Decrease of 15

- All data refers to a comparison with the previous year's month
- It is proposed that performance over time graphs be used for each indicator
- Historic data for comparison is not available for dog fouling

Incidents of Fly Tipping - Bulwell



Cleanliness Index

Cleanliness Index
Score

85

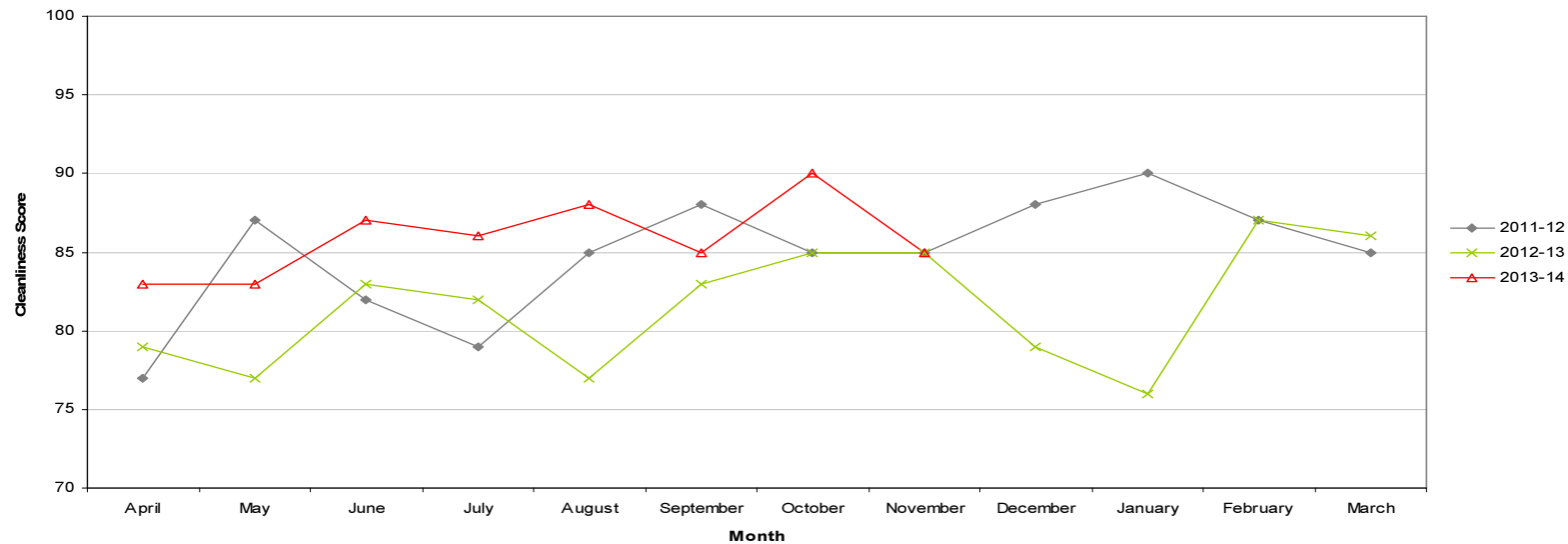
Performance compared to
previous year

±

Performance compared to
neighbourhoods target
of 86

- All data refers to a comparison with the previous year's month
- It is proposed that performance over time graphs be used for each indicator
- Historic data for comparison is not available for dog fouling

Cleanliness Index - Bulwell



Housing

Ward Report - Bulwell

Generated on: 18 December 2013



BWAR1 Anti-social behaviour

Performance indicator and definition	Target	2013/14			2012/13	2011/12
		Value	Status	Long Trend	Value	Value
% of ASB cases resolved – Bulwell <i>Note: This PI measures the proportion of ASB cases NCH has successfully resolved. Data for this PI is not available by ward and is reported by Housing Office.</i>	97.8%	100%			99.19%	97.74%
% of ASB cases resolved by first intervention – Bulwell <i>Note: This PI monitors how many ASB cases NCH resolved on the first intervention e.g. written warning. Data for this indicator is not available by ward and is reported by Housing Office.</i>	76%	83.18%			81.97%	
Number of new ASB cases – Bulwell <i>Note: Data for this PI is only available by Housing Office.</i>		109			114	241
Tenant satisfaction with the ASB service - Bulwell <i>Note: Data for this PI is only available by Housing Office.</i>	8	8.29			6.6	6.99

Housing

BWAR2 Repairs







Performance indicator and definition	Target	2013/14			2012/13	2011/12
		Value	Status	Long Trend	Value	Value
% of repairs completed in target – Bulwell Ward <i>Note: This PI monitors the proportion of repairs being completed within agreed timescales.</i>	96%	97.7%			93.99%	96.08%
Tenant satisfaction with the repairs service <i>Note: Data for this PI is only available citywide</i>	8.8	8.69			8.64	8.65

BWAR3 Rent Collection



Performance indicator and definition	Target	2013/14			2012/13	2011/12
		Value	Status	Long Trend	Value	Value
% of rent collected – Bulwell <i>Note: This PI measures the amount of rent collected (including tenant arrears) as a percentage of rent due for the current year. Data for this indicator is not available by ward and is reported by Housing Office.</i> <i>Trend shows as improving if value is over 100% as arrears are decreasing.</i>	100%	99.4%			100.1%	100.2%

Housing

BWAR4 Empty properties







Performance indicator and definition	Target	2013/14			2012/13	2011/12
		Value	Status	Long Trend	Value	Value
Average void re-let time (calendar days) – Bulwell Ward <i>Note: This PI measures how long it takes NCH to re-let empty properties from the end of the old tenancy to the start of the new tenancy</i>	25	36.05			29.68	26.98
Number of empty properties awaiting decommission – Bulwell Ward <i>Note: This PI shows the number of empty properties which will not be re-let and includes those being decommissioned and / or demolished.</i>		3			8	7
Number of lettable voids – Bulwell Ward <i>Note: Lettable voids are empty properties available for re-letting. They will receive repair work and then be re-let to a new tenant.</i>		22			25	16

BWAR5 Tenancy sustainment

Performance indicator and definition	Target	2013/14			2012/13	2011/12
		Value	Status	Long Trend	Value	Value
Percentage of new tenancies sustained - Bulwell Ward <i>Note: This PI measures the number of new tenants who are still in their tenancy 12 months later.</i>	93.5%	90.83%			90.95%	

Housing

Key:

-  Performance on or exceeding target
-  Performance below target
-  Data only performance indicator
-  Performance has improved compared to two years ago
-  Performance has deteriorated compared to two years ago
-  Performance unchanged

Data prepared by Nottingham City Homes Performance Team

For more information please contact Jonathan Hurst, Performance Data Officer on 0115 9157368 or Marcus Parton, Performance Analyst on 0115 915715

Methodology

Data has not been audited or verified and therefore must only be used as a reflection of crime.

Crime data and ASB calls have been extracted from the Police systems and mapped to ascertain which Ward they occurred in.

Where a ward boundary overlaps with the City Centre, crime data and ASB calls relating to the City Centre have been removed.

Where possible the most recent data is used, although for some areas this may be a month further in arrears.

Discussions continue with other agencies regarding what further data can be included.

Bulwell Forest - Ward Priorities

Theme	Priorities	Key Actions	Outcome	Lead
Safer	Dog Fouling around Deptford estate, Cantrell, Repton, Brooklyn, Bannerman Rds (<i>LAG Priority</i>)	<p>A meeting will be arranged when the majority of the police and community protection team are on duty to agree a joint action plan.</p> <p>NM will request that the poover will visit the relevant areas</p> <p>See It Report It posters will be distributed in the area including vets, noticeboards, shops etc.</p> <p>Residents will report any relevant information eg time of day, description of owner, description of dog.</p>	<p>A meeting took place in December with actions agreed to address this issue. A fine has been on Piccadilly to a resident who failed to clear up after their dog</p> <p>City Services have revised the list of streets that Poover visits to include the priority areas.</p> <p>Community Protection has distributed posters and 450 See It Report cards have been delivered by neighbourhood management to houses within the area.</p>	<p>Safer Neighbourhoods Team/NM/Residents</p> <p>Safer Neighbourhoods Team/NM</p>
	Prevention of burglaries around Rise Park and Top Valley (<i>LAG Priority</i>)	<p>Leah to co-ordinate the production of a leaflet advising residents of the dangers of leaving doors and cars unlocked. Safer neighbourhoods team and Neighbourhood Management to deliver these during December. Depending on the cost, the funding for this could come from the Local Area Group funding.</p>	<p>Neighbourhood Management and the safer neighbourhoods team distributed cards to the properties in the areas most affected.</p>	<p>Police Residents</p>

	<p>Anti Social Behaviour around Latimer Close (Police Priority)</p>	<p>A community alert will be sent out giving crime prevention advice Residents will make residents aware of the importance of locking doors and cars.</p> <p>Safer neighbourhoods Team will;-</p> <ul style="list-style-type: none"> ● Use a number of tactics to tackle this problem, including overt and covert patrols. ● Collate evidence and names of persons causing problems. ● Conduct home visits where applicable to ensure parents are aware of what their children are doing whilst out. ● Deal with criminal offences robustly. ● Involve the antisocial behaviour team, city homes and other applicable agencies for non compliant families. 	<p>A community alert was sent out giving crime prevention advice.</p> <p>A number of suspects have now been identified by the local beat team as a result of regular patrols in the area and help from the local community. 5 addresses have been visited in relation to the anti social behaviour and this has had an immediate affect on calls made to police which have reduced significantly since these visits have taken place. Parents visited have been very understanding and concerned regarding the issues caused by local children and their cooperation has helped reduce calls and victims of anti social behaviour. Regular patrols will continue throughout the month to ensure anti social behaviour remains at a reduction.</p> <p>Recent partnership working has taken place eg trailers have been sited outside hot spot shops in other areas and further</p>	<p>Police</p> <p>Police</p> <p>Community Protection NM</p>
	<p>Shop Thefts (North Locality Priority)</p>	<p>Work to be undertaken to reduce the number of shop thefts.</p>		

			<p>discussions are taking place.</p> <p>Community Protection patrols have taken place around identified hot spot locations.</p> <p>Drop By stalls have taken place outside the Co-op on Highbury Rd</p>	
<p>Neighbourhoods</p> <p>Page 95</p>	<p>Increase community engagement from areas not currently represented at community meetings eg LAGs</p>	<p>Publicised Beat Surgeries will take place on relevant streets</p> <p>Drop Bys involving the ward councillors will take place outside the Co-op on Highbury Rd</p> <p>Courses organised by the Tenant Academy will be publicised to local tenants</p> <p>Bulb planting will take place involving residents of all ages</p>	<p>Publicised beat surgeries have taken place</p> <p>A drop by outside the Co-op took place in early Autumn with several residents talking to councillors and City Council staff about issues in their area.</p> <p>Three bulb planting sessions took place in the Autumn. The bulb planting around PC Ged Walker's memorial site involved children from Cantrell school and residents from Colin Broughton Court sheltered housing complex together with the police dog team, city council officers and Cllr Clark. The shrubbery at the rear of Colin Broughton Court was cut back in response to requests made by</p>	<p>Police/CP</p> <p>NM</p> <p>NCH</p> <p>NM</p>

	<p>Reduce the amount of dog fouling in public places <i>(Reduction in the number of reports of dog fouling and increase in resident satisfaction as evidenced at eg LAG and residents meetings. Increase in fixed penalty notices)</i></p>	<p>Planting will take place on Top Valley estate on derelict land</p> <p>Organisations across the ward will be invited to have a stand at the ward forum on October 12th. Information regarding vacant sites where agreement has been reached regarding future use eg Duffield Court and Henry Mellish will be available at that event.</p> <p>Community Protection will promote the See it Report It campaign at community events.</p> <p>Information will be included within a ward newsletter which will be distributed to all houses within the ward.</p> <p>The use of pineapple scented spray to deter dog fouling in specific areas will be investigated</p>	<p>residents</p> <p>Grassing the derelict areas is due to take place once the weather has improved..</p> <p>A range of organisations had stands at the Bulwell Forest Ward Forum.</p> <p>Community Protection has taken information to events and continues to publicise the See it Report It project.</p> <p>Information about the See It Report It campaign was included in the Bulwell Forest News which was delivered throughout the ward. Cards have been distributed to 450 houses.</p> <p>This was not proved feasible.</p>	<p>NCH/NM</p> <p>NM</p> <p>CP</p> <p>NM</p> <p>Fire</p>
--	--	---	--	---

	Management of vacant sites	<p>Street pastors will give out dog bags on their walks throughout the area.</p> <p>The criteria for dog control areas will be investigated.</p> <p>Information regarding specified areas for use as dog toilets will be obtained. Community Protection will take action wherever appropriate eg undercover operations.</p> <p>All agencies to raise any problem sites at NAT meetings. Information will be provided where appropriate to residents when any new developments are proposed on vacant sites</p> <p>The Fire Service will visit any derelict sites which have empty buildings on them in built up areas to assess for fire risk eg Imperial Rd factory.</p>	<p>Dog Bags have been given to street pastors to take out when patrolling the area.</p> <p>Evidence is required that dogs are causing a serious nuisance before a dog control order can be applied for.</p> <p>Further operations have taken place and fines issued eg on Southglade Park and Piccadilly.</p> <p>Information about proposals for the former Henry Mellish site and the next phase of the Food Court were brought to the Bulwell Forest Ward Forum in October. A drop in session took place in December regarding the proposed new housing development at Rise Park</p> <p>The Fire Service has visited a derelict site of concern but has found that it is secure.</p> <p>City services and Community Protection have worked together where persistent flytipping on vacant site is an issue.</p>	<p>SP</p> <p>NM/CP</p> <p>NM</p> <p>CP</p> <p>All</p> <p>NM</p> <p>Fire</p> <p>CP</p>
--	----------------------------	---	---	---

	Impact of changes in the benefits system	<p>Community Protection will take action where appropriate against landowners.</p> <p>Councillors and Neighbourhood Management will liaise with landowners regarding future developments where appropriate. The possibility of an information session for staff will be investigated.</p> <p>All staff will promote available advice services eg welfare rights.</p> <p>Information will be obtained on the way in which changes in the benefits system are being communicated to tenants and residents either nationally or through organisations such as NCC/NCH and the media.</p> <p>The possibility of providing information to residents in places where they usually meet will be investigated.</p>	<p>Contact has been made with landowners where appropriate</p> <p>This will be arranged when information is available on the introduction of additional benefit changes locally.</p>	<p>Councillors/NM NM</p> <p>All</p> <p>NM/NCH</p> <p>NM</p>
Families	Domestic Abuse (Ward and North Locality Priority)	<p>Information about available training courses to be cascaded to all relevant staff</p> <p>Stickers/posters promoting the helpline numbers to be obtained and distributed to Street Pastors, community centres and other public buildings</p> <p>Malt Cross to investigate the possibility of running a relationship course in the</p>	<p>Information about training courses has been sent out to staff</p> <p>Posters promoting the helpline numbers have been obtained and are being distributed to public buildings.</p> <p>Malt Cross is running a relationship course in early 2014.</p>	<p>All</p> <p>NM, NCH, Malt Cross</p> <p>Malt Cross</p> <p>NM</p>

		<p>course</p> <p>A local awareness raising course to be set up if there is sufficient interest</p> <p>Information to be obtained regarding the Are you Man Enough campaign</p> <p>Information on healthy relationships will continue to be promoted through the exchange programme with French young people</p>	<p>Funding is available for an awareness raising course which can be arranged when there is sufficient interest.</p> <p>A joint stall has been planned for February for Bulwell Market Place to promote the Man Enough Campaign.</p> <p>Aug 13 French Visited for the exchange 9 days of fun and workshops. April exchanged planned. Preparation work and link work ongoing. The Library Service has obtained a range of books on domestic abuse which will be available for residents to borrow.</p>	<p>DoBH</p> <p>F&C</p>
Health	<p>Childhood Obesity and Physical Activity <i>(An increase in referrals to the Go4It Project)</i></p>	<p>Physical activity will be offered as part of every youth and play NCC session</p> <p>Promotion of the Go4It programme will take place</p> <p>Information about the Nutrition Team's healthy eating courses will be obtained and circulated to community groups</p> <p>The Unicef Breastfeeding campaign will continue to be promoted</p>	<p>All sessions have young persons led active elements. Regular basket ball, dodge ball, football and circuit training on offer. F&C promotion in sessions and with partners.</p> <p>Baby friendly Initiative level 2 reached with Bulwell and Bulwell forest Children Centre signed up.</p>	<p>F&C</p> <p>All</p> <p>DoBH/NM</p> <p>F&C</p>

	<p>Reduction in the number of excess winter deaths through energy efficiency measures and energy advice to vulnerable residents</p>	<p>The healthy eating programme will be promoted through the NCC youth and play sessions</p> <p>Census statistics on the number of people aged over 80 to be discussed at a NAT meeting</p> <p>NCH to request details of tenants over 80 years in Bulwell Forest Ward</p> <p>Information to be obtained on the work currently being undertaken by public health</p> <p>Relatives who have concerns about an elderly relative in bad weather can contact Community Protection to request a home visit</p>	<p>Fruit is on offer at all sessions good take up of the offer. World food sessions have been introduced to interest Y/P in food and diet.</p> <p>Community Protection are currently working to identify the most vulnerable people who do not have anyone caring for them. If the resident agrees, their details can be forwarded to the Carers federation Winter Support Project.</p> <p>City Services staff keep in contact with the vulnerable people who use the assisted gardening scheme throughout the winter.</p>	<p>NM</p> <p>NCH</p> <p>DoBH</p> <p>CP</p>
--	---	--	--	--

Working	Increase awareness about access to employment and training opportunities	<p>The possibility of holding an employment event in 2014 will be investigated to include employment, volunteering and training.</p> <p>The Economic Development Team will be invited to local events to promote local schemes</p> <p>Promote employment opportunities created through the Employer Hub (and other channels) to local people and hold sector specific job events in partnership with local support partners – to commence February 2014 onwards.</p>	Economic Development attended the Bulwell Forest Ward Forum on October 12 th	<p>NM</p> <p>NM</p> <p>Economic Development</p>
----------------	--	--	---	---

Page 101

Key	CP	Community Protection	DoBH	Decade of Better Health
	F&C	Family and Community Team	NM	Neighbourhood Management
	NCH	Nottingham City Homes		
	SLC	Southglade Leisure Centre		
	MC	Malt Cross		

Community Engagement

Ward Walks

Area/ Estate	Date	Meeting Point
Austin St flats	October 4th	Colston Rd car park
Bannerman Rd and Logan St	October 15th	Bannerman Rd
Top Valley estate	November 26th	Knights Close
Highbury Hospital, Chatham Court, Palmwood Court, Fairway View	December 10 th and 11th	Palmwood Court

Page 102

Community Meetings

Group	Date	Venue
Bulwell Forest South Local Area Group	October 3rd	St Albans Rd
Fun on the Forest planning group	October 9th	United Reformed Church, Brooklyn Rd
Rise Park Action Group	October 10th	Rise Park Community Centre
Bulwell Forest North Local Area Group	November 19th	Top Valley Academy
Top Valley Tenants and Residents Association	November 21st	Top Valley Community Centre

Top Valley Community Association	November 25th	Top Valley Community Centre
Bulwell Forest South Local Area Group	December 5th	St Albans Rd
Rise Park Action Group	December 10th	Rise Park Community Centre
Top Valley Community Association	December 16th	Top Valley Community Centre
Bulwell Forest Golf Club	December 19th	Hucknall Rd

Events Delivered

Event	Lead Partners	Date/ Time	Venue
Bulwell Forest Ward Forum Page 103	Councillors, neighbourhood management and various organisations	October 12 th 10 - 12	Top Valley Community Centre
Community Bulb Planting	Councillors, Neighbourhood Management, Police Dog Team, Cantrell School, Colin Broughton Court	October 17 th 10am	Ged Walker Memorial Site, St Albans Rd
Apprenticeship Scheme Promotion	NCC	October 21st	Southglade Food Park and other businesses
Pre Budget Consultation	Councillors, Neighbourhood Management	October 18 th 9am – 11am	Bulwell market place
Bulb Planting	Councillors, Neighbourhood	November 27 th , 10am	Austin St flats area

	Management, Nottingham City Homes		
St Mary's Christmas Fair	St Mary's Church	November 30 th 11am – 2pm	Highbury Rd
Bulwell Christmas Festival	Neighbourhood Management and a range of partners	December 2nd	Bulwell Riverside and Bulwell Market place
Rise Park Development Consultation Event	Nottingham City Council and Nottingham Community Housing Association	December 3rd	Church on Rise Park

Future Events and Activities Planned

Event	Lead Partners	Date/ Time	Venue
Budget Consultation	Councillors and neighbourhood management	January 24 th 10am - 12	Bulwell Riverside
Ward Walk	Councillors and Neighbourhood management	February 26 th 10am	To be decided

Finance

Ward Councillor Budgets

Total Amount allocated this period £9182

Budget Remaining Unallocated £29,061 (inc of 2012-13 allocation)

Area Capital Fund

Total Amount allocated this period £51,543

Budget Remaining Unallocated £ (inc of 2012-13 allocation)£79,321

Others – Section 106, NCH Environmentals, Other Funding

£6311 NCH environmentals approved at November 2013 area committee



Bulwell Forest Ward Report

January 2014

Ward Summary

Crime data is shown below for both the current month compared to last year and the year to date.

BULWELL FOREST	Dec-12	Dec-13	Change	% Change	Prev YTD	YTD	Change	% Change
Autocrime	3	7	4	133.33%	49	48	-1	-2.04%
Burglary	11	6	-5	-45.45%	49	55	6	12.24%
Burglary Other	10	2	-8	-80.00%	43	24	-19	-44.19%
Damage	11	20	9	81.82%	143	137	-6	-4.20%
Drugs	3	3	0	0.00%	33	42	9	27.27%
Fraud	0	1	1	100.00%	11	8	-3	-27.27%
Other	1	1	0	0.00%	11	16	5	45.45%
Personal Robbery	3	2	-1	-33.33%	20	20	0	0.00%
Robbery Business	1	0	-1	-100.00%	3	3	0	0.00%
Sexual	0	1	1	100.00%	10	5	-5	-50.00%
Theft	16	24	8	50.00%	200	194	-6	-3.00%
Theft from Person	1	2	1	100.00%	8	8	0	0.00%
Threats	1	7	6	600.00%	12	28	16	133.33%
Violence	6	18	12	200.00%	97	145	48	49.48%
All Crime Total	67	94	27	40.30%	689	733	44	6.39%
ASB	29	38	9	31.03%	345	403	58	16.81%

The summary below shows only year to date figures, and in the case of public realm and fire data, will generally be a month in arrears.

Type	YTD 12/13	YTD 13/14	Volume +/-	% Change
Domestic Violence Crimes	27	59	32	119%
Night Time Economy Violence	0	2	2	200%
Hate Crime	4	4	0	0%
Deliberate Fires	16	8	-8	-50%
Cleanliness	84	84	0	0%
Graffiti	69	101	32	46%
Fly-Tipping	64	102	38	59%

Priorities & Targets

The North Locality has targets to reduce Criminal Damage, Shop Theft and Violence.
Performance against Targets is set out below for the Locality.

Locality Target Summary																
Locality	Crime Type	Apr-13	May-13	Jun-13	Jul-13	Aug-13	Sep-13	Oct-13	Nov-13	Dec-13	Jan-14	Feb-14	Mar-14	YTD	Proposed year end Position	+/- Target Position
North	Criminal Damage	146	141	127	132	167	134	134	126	125	130	130	130	1232	1623	-1
	Shop Theft	61	63	65	45	66	59	48	49	60	45	45	45	516	615	36
	Violence	163	165	197	188	171	148	141	146	153	140	140	140	1472	1864	28

Exception Reporting

Criminal Damage

Criminal Damage has increased by 81.82% (9 more offences) compared to December 2012/13 which has reduced the year to date decrease to 4.20% (6 less offences). The table below shows the wards criminal damage reports on a monthly basis for the year to date, and compares them with the previous year to date.

Criminal Damage														
	Apr	May	Jun	Jul	Aug	Sep	Oct	Nov	Dec	Jan	Feb	Mar	Year Total	YTD
2011-12	20	16	12	18	20	12	18	20	13	11	24	20	204	149
2012-13	24	13	13	10	28	12	17	15	11	15	19	22	199	143
2013-14	15	16	10	16	18	13	13	16	20				137	137
Volume +/-	-9	3	-3	6	-10	1	-4	1	9					-6
% Change on last year	-38%	23%	-23%	60%	-36%	8%	-24%	7%	82%					-4.2%

Shop Theft

Shop Theft offences increased by 18% (2 more offences) compared to December 2012/13. The year to date shows an increase of 1.2% (1 more offence). The table below shows the wards shop theft reports on a monthly basis for the year to date, and compares them with the previous year to date.

Shop Theft														
	Apr	May	Jun	Jul	Aug	Sep	Oct	Nov	Dec	Jan	Feb	Mar	Year Total	YTD
2011-12	12	15	17	14	16	19	20	19	13	24	24	18	211	93
2012-13	21	10	13	19	9	10	12	15	11	20	12	9	161	82
2013-14	20	17	21	5	13	7	8	12	13					83
Volume +/-	-1	7	8	-14	4	-3	-4	-3	2					1
% Change on last year	-5%	70%	62%	-74%	44%	-30%	-33%	-20%	18%					1.2%

Crime Figures

Crime Types by Rate (per 1000 of population) of the 20 Wards – Figures are Year to Date 2013/14

WARD	ALL CRIME	AUTOCRIME	BURGLARY	DAMAGE	PERSONAL ROBBERY	THEFT	VIOLENCE
ARBORETUM	99.06	5.74	9.60	12.56	5.47	15.52	24.85
ASPLEY	67.76	5.96	5.45	11.80	0.91	10.55	17.25
BASFORD	57.44	7.10	5.43	9.87	1.23	10.43	13.39
BERRIDGE	62.46	7.24	5.84	9.17	1.07	14.21	12.49
BESTWOOD	48.23	3.46	5.19	9.91	1.07	6.21	11.58
BILBOROUGH	56.87	6.73	5.36	10.24	0.95	8.99	12.68
BRIDGE	64.90	3.59	1.64	8.31	1.23	26.04	11.69
BULWELL	88.38	5.69	5.08	18.51	1.92	21.97	17.21
BULWELL FOREST	53.84	3.53	4.04	10.06	1.47	14.25	10.65
CLIFTON NORTH	41.43	3.03	4.11	8.69	1.16	5.66	8.46
CLIFTON SOUTH	41.44	2.51	5.31	7.10	0.86	7.31	10.76
DALES	53.28	4.56	2.73	10.08	0.49	11.36	11.54
DUNKIRK AND LENTON	67.95	10.26	6.68	6.41	0.73	21.43	9.43
LEEN VALLEY	54.48	4.58	5.61	8.78	1.68	11.12	10.00
MAPPERLEY	56.42	7.64	4.48	7.83	0.57	10.73	10.67
RADFORD AND PARK	58.59	8.17	6.43	5.41	1.89	16.69	8.93
SHERWOOD	62.09	5.64	5.97	6.49	1.82	21.41	11.16
ST ANNS	66.80	4.65	3.79	12.10	3.79	7.30	18.61
WOLLATON EAST AND LENTON ABBEY	35.57	3.11	5.73	3.62	0.30	12.86	3.52
WOLLATON WEST	29.03	4.75	4.14	3.39	0.27	7.67	2.85
WARD AVERAGE	58.30	5.40	5.13	9.02	1.44	13.09	11.89

All ASB Figures

All ASB by Rate (per 1000 of population) of the 20 Wards)

WARD	RATE (PER 1000 OF POP.) Dec 2013
ARBORETUM	6.82
ASPLEY	3.40
BASFORD	3.64
BERRIDGE	2.36
BESTWOOD	3.64
BILBOROUGH	3.22
BRIDGE	3.08
BULWELL	3.65
BULWELL FOREST	2.79
CLIFTON NORTH	2.25
CLIFTON SOUTH	2.01
DALES	3.95
DUNKIRK & LENTON	1.47
LEEN VALLEY	3.92
MAPPERLEY	2.02
RADFORD & PARK	2.14
SHERWOOD	1.62
ST ANNS	5.23
WOLLATON EAST & LENTON ABBEY	0.80
WOLLATON WEST	0.47
WARD AVERAGE	2.92

	Highest Rate
	Second Highest Rate
	Third Highest Rate

Fire

Table: Volume of Deliberate Primary and Secondary Fires by Ward

		Fire Data							
Locality	Ward	Nov-12	Nov-13	Volume +/-	% Change	Ytd 12-13	Ytd 13-14	Volume +/-	% Change
Central	Arboretum	2	0	-2	-100%	13	18	5	38%
	Berridge	7	3	-4	-57%	35	29	-6	-17%
	Dunkirk and Lenton	1	2	1	100%	5	7	2	40%
	Radford and Park	1	1	0	0%	24	14	-10	-42%
	Sherwood	0	3	3		9	15	6	67%
	Wollaton East and Lenton Abbey	0	0	0		6	6	0	0%
	Wollaton West	0	0	0		2	3	1	50%
Central Locality		11	9	-2	-18%	94	92	-2	-2%
North	Aspley	1	0	-1	-100%	45	34	-11	-24%
	Basford	4	2	-2	-50%	40	26	-14	-35%
	Bestwood	5	0	-5	-100%	31	37	6	19%
	Bilborough	3	2	-1	-33%	34	19	-15	-44%
	Bulwell	6	7	1	17%	60	56	-4	-7%
	Bulwell Forest	0	1	1		28	12	-16	-57%
	Leen Valley	3	2	-1	-33%	20	20	0	0%
North Locality		22	14	-8	-36%	258	204	-54	-21%
South	Bridge	0	2	2		10	14	4	40%
	Clifton North	1	2	1	100%	10	9	-1	-10%
	Clifton South	2	1	-1	-50%	17	25	8	47%
	Dales	1	1	0	0%	6	13	7	117%
	Mapperley	2	0	-2	-100%	14	10	-4	-29%
	St. Anns	2	1	-1	-50%	22	23	1	5%
South Locality		8	7	-1	-13%	79	94	15	19%
Division		41	30	-11	-27%	431	390	-41	-10%

Note: Where ward boundaries overlap with the City Centre fires that occurred in the City Centre have been **included** in the ward figures.

Community Protection

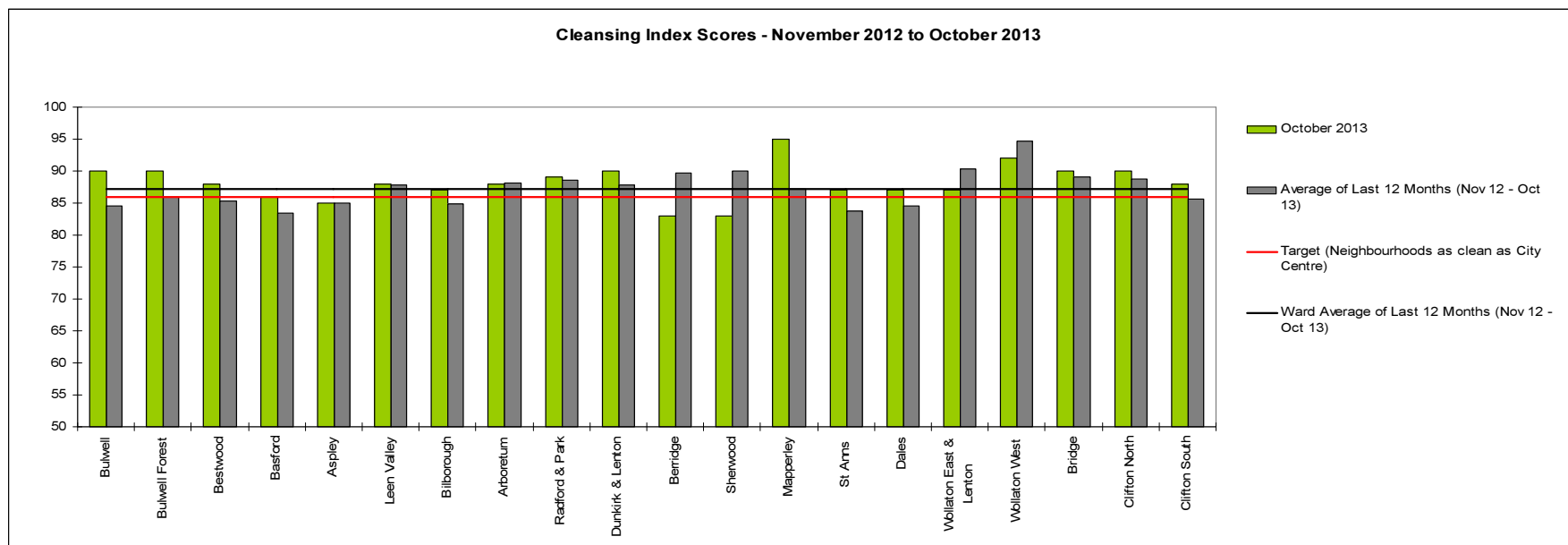
Data has been received from Community Protection and where postcodes have been listed these have been geo-coded and mapped to determine the Ward. All addresses relate to the address of the Perpetrator.

In December 2013 no orders were issued.

For enquiries regarding Community Protection court outcomes please contact the Operational Manager for the locality.

Cleanliness Index

This graph shows the position of your ward compared to other Wards



The “neighbourhood as clean as the city centre” benchmark target on cleanliness is to achieve a score of 86% in every ward. The 86% target is shown in red in the above graph.

To calculate the Cleanliness Index (CI) an agreed number of transects are surveyed across an area covering a range of land types. Each site surveyed is awarded a cleanliness grade based on a 7 point scale from A to D where Grade A: – no litter, and Grade D: - heavily littered. The maximum possible score of 100 is achieved when all sites achieve Grade A.

The Code of Practice for Litter and Refuse (COPLAR) requires councils to strive to reach an ‘acceptable’ standard of cleanliness (grade B or better) across the Council area. Grade A is the ultimate goal and is how a site should be immediately after sweeping but is almost impossible to maintain for any length of time. For example, a grade A site is completely free of litter – one cigarette butt takes it down to B+.

To achieve the manifesto commitment of Neighbourhoods as clean as the City Centre a target of 86 is required as that was the CI for the City Centre in May 2011. To give some context if all areas surveyed achieved a grade ‘B’ standard, this would equate to a cleanliness index of 67.

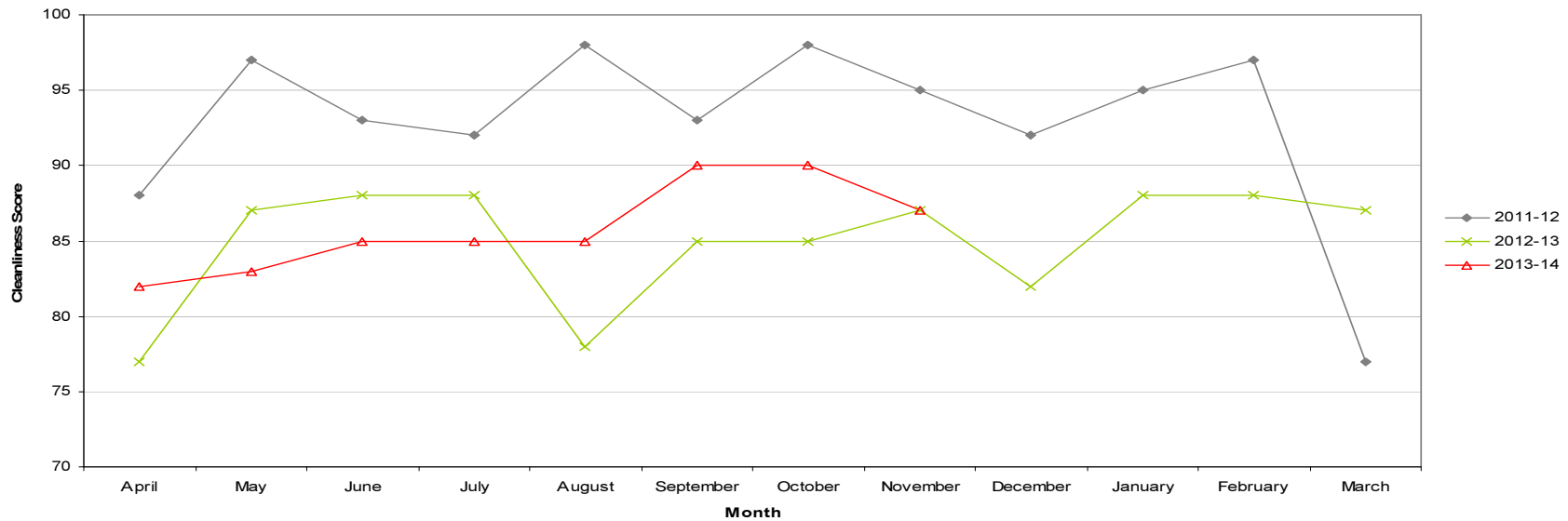
Cleanliness Figures provided by Neil Flaherty – Neighbourhood Services Directorate

Cleanliness Index

Cleanliness Index Score	87
Performance compared to previous year	±
Performance compared to neighbourhoods target of 86	

- All data refers to a comparison with the previous year's month
- It is proposed that performance over time graphs be used for each indicator
- Historic data for comparison is not available for dog fouling

Cleanliness Index - Bulwell Forest

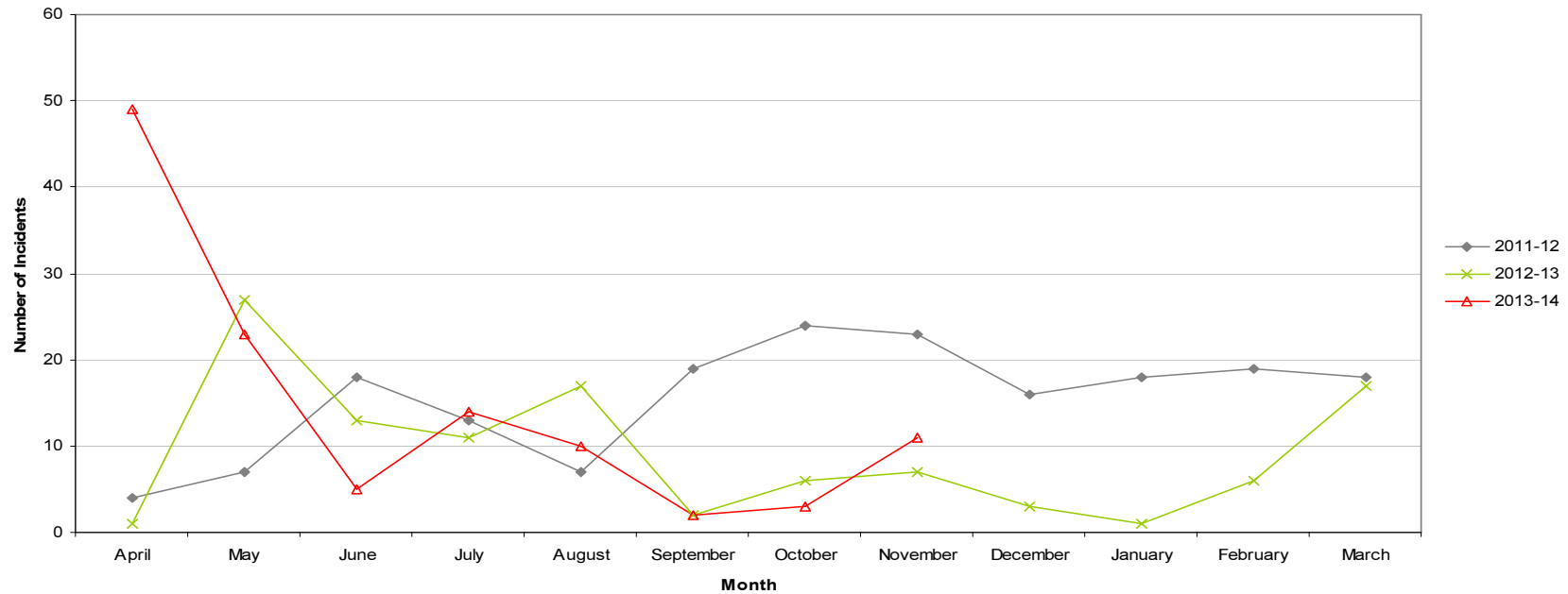


Graffiti Reports

RED	11 incidents	Increase of 4
AMBER		
GREEN		

- All data refers to a comparison with the previous year's month
- It is proposed that performance over time graphs be used for each indicator
- Historic data for comparison is not available for dog fouling

Incidents of Graffiti - Bulwell Forest

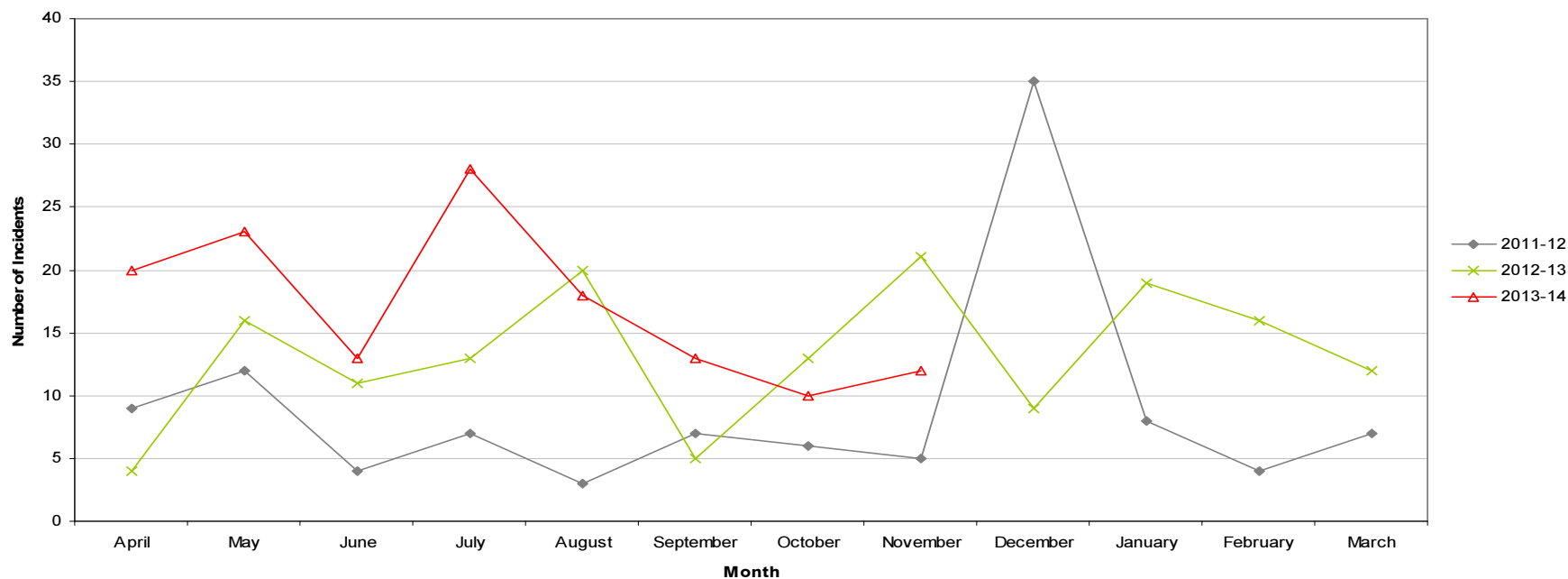


Fly Tipping

RED		
AMBER		
GREEN	12 incidents	Decrease of 9

- All data refers to a comparison with the previous year's month
- It is proposed that performance over time graphs be used for each indicator
- Historic data for comparison is not available for dog fouling

Incidents of Fly Tipping - Bulwell Forest



Housing

Ward Report - Bulwell Forest

Generated on: 18 December 2013







BFOR1 Anti-social behaviour



Performance indicator and definition	Target	2013/14			2012/13	2011/12
		Value	Status	Long Trend	Value	Value
% of ASB cases resolved – Bulwell <i>Note: This PI measures the proportion of ASB cases NCH has successfully resolved. Data for this PI is not available by ward and is reported by Housing Office.</i>	97.8%	100%			99.19%	97.74%
% of ASB cases resolved by first intervention – Bulwell <i>Note: This PI monitors how many ASB cases NCH resolved on the first intervention e.g. written warning. Data for this indicator is not available by ward and is reported by Housing Office.</i>	76%	83.18%			81.97%	
Number of new ASB cases – Bulwell <i>Note: Data for this PI is only available by Housing Office.</i>		109			114	241
Tenant satisfaction with the ASB service - Bulwell <i>Note: Data for this PI is only available by Housing Office.</i>	8	8.29			6.6	6.99

Housing

BFOR2 Repairs







Performance indicator and definition	Target	2013/14			2012/13	2011/12
		Value	Status	Long Trend	Value	Value
% of repairs completed in target – Bulwell Forest <i>Note: This PI monitors the proportion of repairs being completed within agreed timescales.</i>	96%	98.1%			94.31%	96.2%
Tenant satisfaction with the repairs service <i>Note: Data for this PI is only available citywide</i>	8.8	8.69			8.64	8.65

BFOR3 Rent Collection



Performance indicator and definition	Target	2013/14			2012/13	2011/12
		Value	Status	Long Trend	Value	Value
% of rent collected – Bulwell <i>Note: This PI measures the amount of rent collected (including tenant arrears) as a percentage of rent due for the current year. Data for this indicator is not available by ward and is reported by Housing Office.</i> <i>Trend shows as improving if value is over 100% as arrears are decreasing.</i>	100%	99.4%			100.1%	100.2%

Housing

BFOR4 Empty properties







Performance indicator and definition	Target	2013/14			2012/13	2011/12
		Value	Status	Long Trend	Value	Value
<p>Average void re-let time (calendar days) – Bulwell Forest Ward</p> <p><i>Note: This PI measures how long it takes NCH to re-let empty properties from the end of the old tenancy to the start of the new tenancy</i></p>	25	30.81			24.33	20.84
<p>Number of empty properties awaiting decommission – Bulwell Forest Ward</p> <p><i>Note: This PI shows the number of empty properties which will not be re-let and includes those being decommissioned and / or demolished.</i></p>					1	0
<p>Number of lettable voids – Bulwell Forest Ward</p> <p><i>Note: Lettable voids are empty properties available for re-letting. They will receive repair work and then be re-let to a new tenant.</i></p>		7			7	4

BFOR5 Tenancy sustainment

Performance indicator and definition	Target	2013/14			2012/13	2011/12
		Value	Status	Long Trend	Value	Value
<p>Percentage of new tenancies sustained - Bulwell Forest Ward</p> <p><i>Note: This PI measures the number of new tenants who are still in their tenancy 12 months later.</i></p>	93.5%	98.04%			96.08%	

Housing

Key:

-  Performance on or exceeding target
-  Performance below target
-  Data only performance indicator
-  Performance has improved compared to two years ago
-  Performance has deteriorated compared to two years ago
-  Performance unchanged

Data prepared by Nottingham City Homes Performance Team

For more information please contact Jonathan Hurst, Performance Data Officer on 0115 9157368 or Marcus Parton, Performance Analyst on 0115 915715

Methodology

Data has not been audited or verified and therefore must only be used as a reflection of crime.

Crime data and ASB calls have been extracted from the Police systems and mapped to ascertain which Ward they occurred in.

Page 122
Where a ward boundary overlaps with the City Centre, crime data and ASB calls relating to the City Centre have been removed.

Where possible the most recent data is used, although for some areas this may be a month further in arrears.

Discussions continue with other agencies regarding what further data can be included.